

TM 5-4320-259-34P

DEPARTMENT OF THE ARMY TECHNICAL MANUAL

---

TECHNICAL MANUAL

DIRECT SUPPORT, GENERAL SUPPORT AND

DEPOT MAINTENANCE REPAIR PARTS

AND SPECIAL TOOL LISTS

PUMPING ASSEMBLY, FLAMMABLE LIQUID,

BULK TRANSFER, CENTRIFUGAL,

GASOLINE-ENGINE-DRIVEN 100 GPM

(BARNES MODEL US6ACG)

FSN 4320-150-6116

This copy is a reprint which includes current  
pages from Change 1.

---

HEADQUARTERS, DEPARTMENT OF THE ARMY

JANUARY 1972



**TM 5-4320-259-34P**

**C1**

HEADQUARTERS  
DEPARTMENT OF THE ARMY  
Washington, D.C., *3 July 1972*

Change }  
No. 1 }

**Direct Support, General Support and Depot Maintenance  
Repair Parts and Special Tools Lists  
PUMPING, ASSEMBLY, FLAMMABLE LIQUID,  
BULK TRANSFER, CENTRIFUGAL,  
GASOLINE-ENGINE-DRIVEN 100 GPM  
(BARNES MODEL US6ACG)  
FSN 4320-150-6116**

**Current as of 9 June 1972**

TM 5-4320-259-34P, 6 January 1972, is changed as follows:

All changes, additions or deletions of federal stock numbers or manufacturer's part numbers should be appropriately reflected in the parts listing and index of the manual.



Page	Line	Action	(1)	(2)	(3)	(4)	(5)	(6)			(7)			(8)	(9)	(10)	
			SMR Code	Federal stock No	Description	Unit of issue	Qty inc in unit	30-day GS maint allowance			30-day GS maint allowance			1-Yr alw per 100 equip cntgcy	Depot maint alw per 100 equip	Illustration	
			Index No.		Reference No. & mfr. Code	Usable on code	(a) 1-20	(b) 21-50	(c) 51-100	(a) 1-20	(b) 21-50	(c) 51-100			(a) Fig No.	(b) Item No.	
	15	Add Col 2		4730-826-6512	PLUG, PIPE*** 03219 (05748)												
	16			5307-246-2448	STUD*** 02408 (05748)												
	17			5307-140-8148	STUD*** 02418 (05748)												
6	11			2990-164-3247	GROUP 06 — AIR BAFFLES AND EXHAUST ELBOW ELBOW, MUFFLER 220289 (34199)												
7	9			2910-164-3253	GROUP 07 — GOVERNOR LINKAGE DISK ASSY. GOVERNOR REGULATING A221216 (34199)												
	5			4730-231-5632	GROUP 08—FUEL SYSTEM ELBOW, PIPE TO TUBE *** X447-10 (34199)												
	6			2910-164-3249	LINE ASSY, FUEL A220807 (34199)												
8	1			2910-164-3251	STRAP ASSY, TANK A234167 (34199)												
	8			2910-164-3250	ELEMENT STRAINER 220880 (34199)												
	12			2910-537-1309	FUEL TANK 220527 (34199)												
	13			2910-164-3252	BRACKET ASSY, TANK A221254 (34199)												
9	1			5310-173-3166	GROUP 09—AIR CLEANER AND MOUNTING NUT, WING*** JZM001731T (77122)												
	3			5330-166-1809	GASKET, AIR CLEANER 210469 (34199)												
10	6			2990-164-3248	GROUP 11—FLYWHEEL AND MAGNETO PULLEY, STARTER 220150 (34199)												



By Order of the Secretary of the Army:

W. C. WESTMORELAND,  
*General, United States Army,*  
*Chief of Staff.*

Official:

VERNE L. BOWERS,  
*Major General, United States Army,*  
*The Adjutant General.*

Distribution:

To be distributed in accordance with DA Form 12-25A, (qty rqr block No. 155) direct and general support maintenance requirements for Petroleum Distribution.





**DIRECT SUPPORT, GENERAL SUPPORT AND  
 DEPOT MAINTENANCE REPAIR PARTS  
 AND SPECIAL TOOL LISTS  
 PUMPING ASSEMBLY, FLAMMABLE LIQUID,  
 BULK TRANSFER, CENTRIFUGAL,  
 GASOLINE-ENGINE-DRIVEN, 100 GPM  
 (BARNES MODEL US6ACG)**

**FSN4320-150-6116**

Current as of 30 December 1971

		Listing Page	Illus Figure
SECTION	I. Introduction . . . . .	iii	
	II. Repair Parts for Direct Support, General Support, and Depot Maintenance. . . . .	1	
Group	01 Suction hose assembly . . . . .	1	1
	02 Discharge hose assembly . . . . .	1	2
	03 Nozzle assembly . . . . .	1	3
	04 Pumping unit and frame . . . . .	4	4
	05 Pump assembly . . . . .	5	5
	06 Air baffles and exhaust elbow. . . . .	6	6
	07 Governor linkage . . . . .	7	7
	08 Fuel system . . . . .	7	8
	09 Air cleaner and mounting. . . . .	9	9
	10 Breather . . . . .	9	10
	11 Flywheel and magneto . . . . .	10	11
	12 Ignition . . . . .	11	12
	13 Cylinder head, valves, and piston . . . . .	11	13
	14 Cylinder block, crankshaft and oil pan . . . . .	13	14
	15 Kits and sets . . . . .	14	
SECTION	III. Special Tools, Test and Support Equipment—Not Applicable . . . . .	15	
	IV. Federal Stock Number and Reference Number Index . . . . .	30	



## Section I INTRODUCTION

### 1. Scope

This manual lists repair parts required for the performance of direct support, general support, and depot maintenance of the pumping assembly.

### 2. General

This Repair Parts and Special Tools List is divided into the following sections:

*a. Repair Parts—Section II.* A list, in figure and item number sequence of repair parts authorized for the performance of maintenance at the direct support, general support, and depot level, including those items which must be removed for replacement of the authorized item. Items, except kits and sets, are listed by assembly groups in top down breakdown sequence. Repair parts kits and sets are listed separately as Group at the end of the Repair Parts List without regard to the assembly group to which they belong. Components of the kits and sets are listed in their proper sequence in the assembly group to which they belong and are referenced to the FSN of the kit or set.

*b. Special Tools, Test and Support Equipment—Section III.* Not Applicable.

*c. Federal Stock Number and Reference Number Index—Section IV.* A list of Federal stock numbers in ascending numerical sequence followed by a list of reference numbers in ascending alphanumeric sequence, cross-referenced to the illustration figure number and item number.

### 3. Explanation of Columns

The following provides an explanation of columns in the tabular lists in section II.

*a. Source, Maintenance, and Recoverability Codes (SMR), Column (1):*

*(1) Source code.* Indicates the selection status and source for the listed item. Source codes used are:

<i>Code</i>	<i>Explanation</i>
P	Repair Parts, Special Tools and Test Equipment supplied from the GSA / DSA, or Army supply system, and authorized for use at indicated maintenance categories.
P2	Repair Parts, Special Tools and Test Equipment which are procured and stocked for insurance purposes because the combat or military essentiality of the end item dictates that a minimum quantity be available in the supply system.
M	Repair Parts, Special Tools and Test Equipment which are not procured or stocked, as such, in the supply system but are to be manufactured at indicated maintenance levels.
A	Assemblies which are not procured or stocked as such, but are made up of two or more units. Such component unit carry individual stock numbers and descriptions, are procured and stocked separately and can be assembled to form the required assembly at indicated maintenance categories.

<i>Code</i>	<i>Explanation</i>
X	Parts and assemblies that are not procured or stocked because the failure rate is normally below that of the applicable end item or component. The failure of such part or assembly should result in retirement of the end item from the supply system.
X1	Repair Parts which are not procured or stocked. The requirement for such items will be filled by the next higher assembly or component.
X2	Repair Parts, Special Tools, and Test Equipment which are not stocked and have no foreseen mortality. The indicated maintenance category requiring such repair parts will attempt to obtain the parts through cannibalization or salvage, the item may be requisitioned with exception data, from the end item manager, for immediate use.
G	Major assemblies that are procured with PEMA funds for initial issue only as exchange assemblies at DSU and GSU level. These assemblies will not be stocked above the DS and GS level or returned to depot supply level.

Note: Cannibalization or salvage may be used as a source of supply for any items source coded above except those coded X 1 and aircraft support items as restricted by AR 700-42.

*(2) Maintenance code.* Indicates the lowest category of maintenance authorized to install the listed item. The maintenance level codes are:

<i>Code</i>	<i>Explanation</i>
C	Operator / Crew Maintenance
O	Organizational Maintenance
F	Direct Support Maintenance
H	General Support Maintenance
D	Depot Maintenance

*(3) Recoverability code.* Indicates whether unserviceable items should be returned for recovery or salvage. Items not coded are expendable. Recoverability codes are:

<i>Code</i>	<i>Explanation</i>
R	Applied to repair parts, (assemblies and components) special tools and test equipment which are considered economically repairable at direct and general support maintenance levels. When the item is <b>NO</b> longer economically repairable, it is normally disposed of at the GS level. When supply considerations dictate, some of these repair parts may be listed for automatic return to supply for depot level repair as set forth in AR 710-50. When so listed, they will be replaced by supply on an exchange basis.
S	Repair Parts, Special Tool., Test Equipment and assemblies which are economically repairable at DSU and GSU activities and which normally are furnished by supply on an exchange basis. When items are determined by a GSU to be uneconomically repairable, they will be evacuated to a depot for evaluation and analysis before final disposition.

<i>Code</i>	<i>Explanation</i>
T	Higher dollar value recoverable repair parts, special tools and test equipment which are subject to special handling and are issued on an exchange basis. Such items will be repaired or overhauled at depot maintenance activities only. No repair may be accomplished at lower levels.
U	Repair Parts, Special Tools and Test Equipment specifically selected for salvage by reclamation units because of precious metal content, critical materials, high dollar value or reusable casings or castings.

*b. Federal Stock Number, Column (2).* Indicates the Federal stock number assigned to the item and will be used for requisitioning purposes.

*c. Description, Column (3).* Indicates the Federal item name and any additional description of the item required. A part number or other reference number is followed by the applicable five-digit Federal supply code for manufacturers in parentheses. Repair parts quantities included in the kits, sets, and assemblies are shown in front of the repair part name.

*d. Unit of Measure (U/M), Column (4).* A 2-character alphabetic abbreviation indicating the amount or quantity of the item upon which the allowances are based, e.g., ft, ea, pr, etc.

*e. Quantity Incorporated in Unit, Column (5).* This column indicates the quantity of the item used in the assembly group. A "V" appearing in this column in lieu of a quantity indicates that a definite quantity cannot be indicated (e.g., shims, spacers, etc.).

*f. 30-Day DS/GS Maintenance Allowances, Columns (6) and (7).*

Note: Allowances in GS column are for GS maintenance only.

(1) The allowance columns are divided into three subcolumns. Indicated in each subcolumn, opposite the first appearance of each item is the total quantity of items authorized for the number of equipments supported. Subsequent appearances of the same item will have the letters "REF" in the applicable allowance columns. Items authorized for use as required but not for initial stockage are identified with an asterisk in the allowance column.

(2) The quantitative allowances for DS/GS levels of maintenance will represent initial stockage for a 30-day period for the number of equipments supported.

(3) Determination of the total quantity of parts required for maintenance of more than 100 of these equipments can be accomplished by converting the equipment quantity to a decimal factor by placing a decimal point before the next to last digit of the number to indicate hundredths, and multiplying the decimal factor by the parts quantity authorized in the 51-100 allowance column.

Example, authorized allowance for 51-100 equipments is 40; for 150 equipments multiply 40 by 1.50 or 60 parts required.

*g. 1-Year Allowances Per 100 Equipments/Contingency Planning Purposes, Column (8).* This column indicates opposite the first appearance of each item the total quantity required for distribution and contingency planning purposes. The range of items indicates total quantities of all authorized items required to provide for adequate support of 100 equipments for one year.

*h. Depot Maintenance Allowance Per 100 Equipments, Column (9).* This column indicates opposite the first appearance of each item, the total quantity authorized for depot maintenance of 100 equipments. Subsequent appearances of the same item will have the letters "REF" in the allowance column. Items authorized for use as required but not for initial stockage are identified with an asterisk in the allowance column.

*i. Illustration, Column (10).* This column is divided as follows:

(1) *Figure number, column (10) (a).* Indicates the figure number of the illustration in which the item is shown.

(2) *Item number, column (10)(b).* Indicates the callout number used to reference the item in the illustration.

#### **4. Special Information**

*a.* Repair parts mortality has been based on 1,000 hours of operation per year.

*b.* Parts which require manufacture or assembly at a category higher than that authorized for installation will indicate in the source column the higher category.

*c.* The following publications pertain to the pumping assembly and its components.

TM 5-4320-259-12 Operator and Organizational Maintenance Manual

TM 5-4320-259-34 Maintenance Manual

TM 5-4320-259-20P Organizational Maintenance Repair Parts List

#### **5. How to Locate Repair Parts**

*a.* When Federal stock number or reference number is unknown:

(1) *First.* Using the table of contents, determine the assembly group, i.e., engine, engine assembly, transmission, transmission assembly, within which the repair part belongs. This is necessary since illustrations are prepared for assembly groups, and listings are divided into the same groups.

(2) *Second.* Find the illustration covering the assembly group to which the repair part belongs.

(3) *Third.* Identify the repair part on the illustration and note the illustration figure and item number of the repair part.

(4) *Fourth.* Using the Repair Parts Listing, find the assembly group to which the repair part belongs and locate the illustration figure and item number noted on the illustration.

*b.* When Federal stock number or reference number is known:

(1) *First.* Using the Index of Federal Stock Numbers and Reference Numbers find the pertinent Federal stock number or reference number. This index is in ascending FSN sequence followed by a list of reference numbers in ascending alpha-numeric sequence, cross-referenced to the illustration figure number and item number.

(2) *Second.* Using the Repair Part Listing, find the assembly group of the repair part and the illustration figure number and item number referenced in the Index of Federal Stock Numbers and Reference Numbers.

## 6. Abbreviations

<i>Abbreviations</i>	<i>Explanation</i>
assy . . . . .	assembly
brs . . . . .	brass
cad. pl . . . . .	cadmium plated
cres. . . . .	corrosion-resistant steel
EPT, . . . . .	External Pipe Thread
fh . . . . .	flat head
fil. . . . .	fillister
hd. . . . .	head
int . . . . .	internal
IPT. . . . .	Internal Pipe Thread
lg . . . . .	long
med . . . . .	medium
MI . . . . .	malleable iron
NPT. . . . .	National Taper Pipe Thread
NPTF. . . . .	National Taper Pipe Thread for Tight Joints
SST . . . . .	stainless steel
stl . . . . .	steel
thd . . . . .	thread
thk . . . . .	thick

## 7. Federal Supply Codes for Manufacturers

<i>Code</i>	<i>Manufacturer</i>
00818 . . .	R. E. Phelon Company, Inc.
05748 . . . .	Barnes Manufacturing Company
06947 . . . .	TRW, Inc., Motor Equipment Manufacturing Division, 23555 Euclid Avenue Cleveland, Ohio
11583 . . .	Champion Spark Plug Company Toledo, Ohio
34199 . . . .	Kohler Company
43334 . . . .	New Departure-Hyatt Bearing Division, General Motors Corporation Sandusky, Ohio
61864 . . . .	United-Carr, Inc., Boston, Massachusetts
77122 . . . .	Palnut Company
77535 . . . .	Raymond Manufacturing Division of Associated Spring Corporation
78940 . . . .	United Air Cleaner Division, United Filtration Corporation
79150, . . .	Dana Corporation, Victor Division, Chicago, Illinois
79470 . . . .	The Weatherhead Company, Cleveland, Ohio
80204 . . . .	American National Standards Institute
81168 . . . .	Hercules Packing Corporation, Linear Seal Division, Alden, New York
81718 . . . .	Dover Corporation, OPW Division, Cincinnati, Ohio
94135 . . . .	Naval Ordnance Standards
96906 . . . .	Military Standards

## 8. Recommendations for Maintenance Publication Improvements

Report of errors, omissions, and recommendations for improving this publication by the individual user is encouraged. Reports should be submitted on DA Form 2028 (Recommended Changes to Publications) and forwarded direct to U.S. Army Mobility Equipment Command, 4300 Goodfellow Blvd., ATTN: AMSME-MPP, St. Louis, Mo. 63120.



Section II. REPAIR PARTS FOR DIRECT SUPPORT, GENERAL SUPPORT, AND DEPOT MAINTENANCE

(1) SMR CODE	(2) FEDERAL STOCK NUMBER	(3) DESCRIPTION  USABLE ON CODE  REF NUMBER & MFR CODE	(4) UNIT OF MEAS	(5) QTY INC IN UNIT	(6) 30-DAY DS MAINT ALLOWANCE			(7) 30-DAY GS MAINT ALLOWANCE			(8) 1-YR ALW PER 100 EQUIP CNTGY	(9) DEPOT MAINT ALW PER 100 EQUIP	(10) ILLUS- TRATION	
					(a)	(b)	(c)	(a)	(b)	(c)			(a)	(b)
					1-20	21-50	51-100	1-20	21-50	51-100			FIG. NO.	ITEM NO.
		GROUP 01 - SUCTION HOSE ASSEMBLY												
2-O--		HOSE ASSY, SUCTION 38074SA (05748)	EA	1	*	*	*	*	*	*	5	6	1	1
1----	4320-360-0947	CLAMP, HOSE 05858 (05748)	EA	4									1	2
2-O--	5340-825-5317	COUPLING HALF, DUST CAP MS27028-9 (96906)	EA	1									1	3
--O--	4730-360-0595	GASKET MS27030-5 (96906)	EA	1	*	1	2	*	1	2	20	35	1	4
1----	4730-360-0592	COUPLING HALF, MALE MS27021-9 (96906)	EA	1									1	5
1----	5340-823-5316	COUPLING HALF, DUST PLUG MS27029-9 (96906)	EA	1									1	6
1----	4730-360-0591	COUPLING HALF, FEMALE MS27025-9 (96906)	EA	1									1	7
--O--	4730-360-0595	GASKET MS27030-5 (96906)	EA	1	REF	REF	REF	REF	REF	REF	REF	REF	1	8
1----		HOSE 38955 (05748)	EA	1	*	*	*	*	*	*	5	6	1	9
		GROUP 02 - DISCHARGE HOSE ASSEMBLY												
--O--		HOSE ASSY, DISCHARGE 38075SA (05748)	EA	2	1	1	2	1	1	2	25	8	2	1
1----	4320-360-0947	CLAMP, HOSE 05858 (05748)	EA	8									2	2
2-O--	5340-825-5317	COUPLING HALF, DUST CAP MS27028-9 (96906)	EA	2									2	3
--O--	4730-360-0595	GASKET MS27030-5 (96906)	EA	2	REF	REF	REF	REF	REF	REF	REF	REF	2	4
1----	4730-360-0592	COUPLING HALF, MALE MS27021-9 (96906)	EA	2									2	5
1----	5340-823-5316	COUPLING HALF, DUST PLUG MS27029-9 (96906)	EA	2									2	6
1----	4730-360-0591	COUPLING HALF, FEMALE MS27025-9 (96906)	EA	2									2	7
--O--	4730-360-0595	GASKET MS27030-5 (96906)	EA	2	REF	REF	REF	REF	REF	REF	REF	REF	2	8
1----		HOSE 38953 (05748)	EA	2									2	9
		GROUP 03 - NOZZLE ASSEMBLY												
--O--		NOZZLE ASSY 15689SA (0 5748)	EA	2	*	1	2	*	1	2	18	10	3	1
1----	5340-823-5316	COUPLING HALF, DUST PLUG MS27029-9 (96906)	EA	2									3	2

(1) SMR CODE	(2) FEDERAL STOCK NUMBER	(3) DESCRIPTION  REF NUMBER & MFR CODE	(4) USABLE ON CODE	(5) QTY INC IN UNIT	(6) 30-DAY DS MAINT ALLOWANCE			(7) 30-DAY GS MAINT ALLOWANCE			(8) 1-YR ALW PER 100 QUIP NTGY	(9) EPO: AINT ALW PER 100 QUIP	(10) ILL TR DN	
					(a)	(b)	(c)	(a)	(b)	(c)			(a)	(b)
					1-20	1-50	1-100	1-20	1-50	1-100			FIG. NO.	TEM NO.
1----		COUPLING HALF, FEMALE MS27026-9 (96906)	EA	2								3	3	
--O-	4730-360-0595	GASKET MS27030-5 (96906)	EA	2	REF	REF	REF	REF	REF	REF	REF	REF	REF	
1----		NOZZLE 190GA1 1-2IN (81718)	EA	2								3	5	
1----		WIRE , GROUND 616W (81718)	EA	2								3	6	
--O-		PIN, COTTER H1471M (81718)	EA	2	*	*	*	*	*	*	1	10	3	7
2-O-		PIN, LEVER H3353 (81718)	EA	2								3	8	
1----		LEVER H1668B (81718)	EA	2								3	9	
1----		CAP H3804A (81718)	EA	2								3	10	
1----		LINK H3673M (81718)	EA	4								3	11	
1----		LINK, CHAIN H284M (81718)	EA	4								3	12	
1----		SPRING, LEVER H3667M (81718)	EA	2								3	13	
1----		ADAPTER AND TUBE 296 (81718)	EA	2								3	14	
1----		STRAINER 153 1 1-2X1 5-8IN (81718)	EA	2								3	15	
1----		CAP H1669A (81718)	EA	2								3	16	
1----		SPRING, POPPET H2061M (81718)	EA	2								3	17	
1----		POPPET PART OF KIT FSN 4930-904-1383 C838M (81718)	EA	2								3	18	
1----		RETAINER, DISK H1670M (81718)	EA	2								3	19	
1----		DISK PART OF KIT FSN 4930-904-1383 H502M (81718)	EA	2								3	20	
1----		WASHER , DISK H428RA (81718)	EA	2								3	21	
1----		NUT H213RB (81718)	EA	2								3	22	
1----		STEM H538RE (81718)	EA	2								3	23	
1----		PACKING NUT PART OF KIT FSN 4930-904-1383 H113RA (81718)	EA	2								3	24	
1----		GLAND , PACKING H7012M (81718)	EA	2								3	25	
1----		STUFFING BOX H195RB (81718)	EA	2								3	26	



(1) SMR CODE	(2) FEDERAL STOCK NUMBER	(3) DESCRIPTION  REF NUMBER & MFR CODE	USABI ON COD	U I M I	(6) 30-DAY DS MAINT ALLOWANCE			(7) Y L E MINT DE			(8) 1-YR AL PE 100 EQU CONT	(9) DEF MAI AL PE 100 QUI	(10) Of	
					(c)	(c)	(c)	(c)	(c)	(c)			(b)	(b)
					1	2	31-1	1	21	31-			F	TE
		PACKING PART OF KIT FSN 4930-904-1383 H714M (81718)		E									2	
		BODY D546A (81718)		E									2	
		GROUP 04 - PUMPING UNIT AND FRAME												
--O	5305-068-050	SCREW, CAP HEX HD, STL, CAD, PL, 1/4-20 THD, 3/4 IN. LG MS90725-6 (96906)		E	*	*	*	*	*	*	1	20	4	1
-O	5310-761-688	NUT, PLAIN, HEXAGON STL, CAD, PL, 1/4-20 THD MS51967-2 (96906)		E	*	*	*	*	*	*	1	20	4	2
-O	5310-582-596	WASHER, LOCK STL, CAD, PL, 1/4 IN., MED MS35338-44 (96906)		E	*	*	*	*	*	*	1	20	4	3
-O	5305-071-224	SCREW, CAP HEX HD, STL, CAD, PL, 1/4-20 THD, 1-3/8 IN. LG MS90725-11 (96906)		E	*	*	*	*	*	*	1	10	4	4
-O	5310-809-405	WASHER, FLAT STL, CAD, PL, 0.281 IN. ID, 1.625 IN. OD, 0.065 IN. THK MS27183-10 (96906)		E	*	*	*	*	*	*	1	.5	4	5
X2-O		SPACER, SLEEVE HOSE CONTAINER 18685 (05748)		A										6
X2-O		CONTAINER, HOSE 8607SA (05748)		A										7
P-O		PUMP UNIT ASSY 8570SA (05748)		A										8
P-O		BOLT ASSY 38732SA (05748)		A							1	0		9
X1		S-HOOK 09307 (05748)		A										10
X1		CHAIN 38737 (05748)		A										11
X1		BOLT SUBASSY 38733 (05748)		A										12
X2-O	340-825-5317	COUPLING HALF, DUST CAP MS27028-9 (96906)		A										13
P-O	730-360-0595	GASKET MS27030-5 (96906)		A	F	I	F	F	IE F	F	F	F	F	14
X2-O		CROSS, DISCHARGE 835C1 1-2IN (81718)		EA										15
X2-O		COUPLING, HALF, MALE SUCTION MS27022-9 (96906)		EA										16
P-F	310-880-7744	NUT, PLAIN, HEXAGON STL, CAD, PL, 5/16-18 THD MS51967-5 (05748)		EA	*			*						17
X2-F		FLANGE, SUCTION 18676 (05748)		EA										18
P-F		GASKET, SUCTION FLANGE 17204 (05748)		EA	1	2		1	3		0			19

(1) MFR CODE	(2) FEDERAL STOCK NUMBER	(3) DESCRIPTION  REF NUMBER & MFR CODE	(4) USABLE ON CODE	(5) UNIT OF MEAS	(6) QTY INC IN UNIT	(6) 30-DAYDS MAINT ALLOWANCE			(7) 30-DAY GS MAINT ALLOWANCE			(8) 1-YR ALW PER 100 EQUIP CNTGY	(9) DEPOT MAINT ALW PER 100 EQUIP	(10) ILLUS- TRATION	
						(a)	(b)	(c)	(a)	(b)	(c)			(a)	(b)
						1-20	21-50	51-100	1-20	21-50	51-100			FIG. NO.	ITEM NO.
-F--	5310-407-9566	WASHER, LOCK STL, CAD. PL, 5/16 IN., MED MS35338-45 (96906)		EA	8	*	*	*	*	*	*	1	12	4	20
-F-R		PUMP ASSY 38691SA (05748)		EA	1	*	*	*	*	*	*	5	10	4	21
-F--		STUD STL, CAD. PL, 5/16-18 THD, 1-1/8 IN. LG 17397 (05748)		EA	4	*	*	*	*	*	*	1	25	4	22
-O--		MUFFLER SPARK ARRESTOR 38698 (05748)		EA	1	1	1	2	1	1	2	25	15	4	23
-O--		COUPLING, PIPE STL, 3/4 IN. IPT 03229 (05748)		EA	1	*	*	*	*	*	*	1	4	4	24
-O--		NIPPLE, PIPE STL, 3/4 IN. IPT, 3/8 IN. LG		EA	1	*	*	*	*	*	*	1	4	4	25

XZ

(1) SMR CODE	(2) FEDERAL STOCK NUMBER	(3) DESCRIPTION  REF NUMBER & MFR CODE	(4) UNIT OF EAS	5) QTY NC IN NIT	(6) 30-DAY DS MAINT ALLOWANCE			30-DAY GS D/W/			NT YR W ER 10 UIP TGY	(9) EPO AINT LW ER 00 UIP	(10)	
					a)	b)	c)	d)	e)	f)			LL FR/	N
					20	1-50	-100	20	-50	-100			G.	EM
P--O-	5305-175-3230	SCREW, DRIVE GRES, NO. 4 X 3/16 IN. LG, TYPE U MS21318-14 (96906)	EA	4	*	*	*	*	*	*	1	10	1	38
X2-O-		PLATE, IDENTIFICATION 38696 (05748)	EA	1									1	39
X2-O-		FRAME 38571SA (05748)	EA	1									1	10
GROUP 05 - PUMP ASSEMBLY														
P--F-]		PUMP ASSY 38691SA (05748)	EA	1	EF	EF	EF	E1	EF	EF	EF	EF	5	1
P--F-	5310-732-0558	NUT ,PLAIN,HEXAGON STL, CAD. PL, 3/8-16 THD MS51967-8 (96906)	EA	3	EF	EF	EF	E1	EF	EF	EF	EF	5	2
P--F-	5310-637-9541	WASHER, LOCK STL, CAD. PL, 3/8 IN., MED MS35338-46 (96906)	EA	3	EF	EF	EF	E1	EF	EF	EF	EF	5	3
X2-F-		VOLUTE , PUMP 38679 (05748)	EA	1									5	4
P2-F-		IMPELLER, PUMP 38680 (05748)	EA	1	*	*	*	*	*	*	5	25	5	5
P--F-		SHIM SST , 33/64 IN. ID, 7/8 IN. OD, 0.005 IN. THK 17109 (05748)	EA	1	*	1	1	*	1	1	12	20	5	6
P--F-		SHIM SST , 33/64 IN. ID, 7/8 IN. OD, 0.010 IN. THK 17064 (05748)	EA	1	*	1	1	*	1	1	12	20	5	7
P--F-		PACKING, PRE FORMED 568-269 (81168)	EA	1	*	1	1	*	1	1	15	30	5	8
P--F-	4320-627-4731	SEAL, SHAFT 12703 (05748)	EA	1	1	1	3	1	1	3	30	00	5	9
X2-F-		PIN, VOLUTE 17715 (05748)	EA	2									5	10
X2-F-		INTERCOUPLING, PUMP 38678 (05748)	EA	1									5	11
P--F-	5330-251-4030	GASKET, VOLUTE 17714 (05748)	EA	1	*	1	1	*	1	1	15	30	5	12
X2-F-		BODY ASSY, PUMP 38694SA (05748)	EA	1									5	13
P--O-		PLUG, PIPE MI, ZINC PL, 1 IN. NPT 03220 (05748)	EA	1	*	*	*	*	*	*	1	6	5	14
P--O-		PLUG, PIPE MI, ZINC PL, 3/4 IN. NPT 03219 (05748)	EA	1	*	*	*	*	*	*	1	6	5	15
P--F-		STUD STL, CAD. PL, 5/16-18 THD, 1-1/4 IN. LG 02408 (05748)	EA	3	*	*	*	*	*	*	1	30	5	16
P--F-		STUD STL, CAD. PL, 3/8-16 THD, 1-3/4 IN. LG 02418 (05748)	EA	1	*	*	*	*	*	*	1	10	5	17

(1) SMR CODE	(2) FEDERAL STOCK NUMBER	(3) DESCRIPTION  REF NUMBER & MFR CODE	(4) USABLE ON CODE  JN1' OF MEA	(5) QT INC IN JN1	(6) 30-DAY DS MAINT ALLOWANCE			(7) 30-DAY GS MAINT ALLOWANCE			(8) 1-YR ALW PER 100 NTG	(9) EPC IAIN' ALW PER 100 QUIP	(10) IL TF ON	
					(a) 1-20	(b) 11-50	(c) 51-100	(a) 1-20	(b) 11-50	(c) 51-100			(a)	(b)
					*	*	*	*	*	*			FIG NO.	TEM NO.
1-F-		STUD STL, CAD. PL, 3/8-16 THD, 1-1/2 IN. LG 02417 (05748)	EA	2	*	*	*	*	*	*	1	10	5	18
2-F-		BODY, PUMP 38677 (05748)	EA	1									5	19
		GROUP 06 - AIR BAFFLES AND EXHAUST ELBOW												
--O-	305-958-5245	SCREW, CAP FH, STL, CAD. PL, 1/4-20 THD, 5/8 IN. LG MS35190-288 (96906)	EA	4	*	*	*	*	*	*	1	8	6	1
--O-	310-550-1130	WASHER, LOCK STL, CAD. PL, 1/4 IN., INT TEETH MS35333-40 (96906)	EA	1	*	*	*	*	*	*	1	4	6	2
2-O-		BAFFLE, CYLINDER HEAD 220605 (34199)	EA	1									6	3
--O-	310-637-9541	WASHER, LOCK STL, CAD. PL, 1/4 IN., MED MS35338-46 (96906)	EA	3	EF	EF	EF	EF	EF	EF	REF	REF	6	4
2-O-		BAFFLE, CYLINDER BLOCK 220054 (34199)	EA	1									6	5
2-O-		FASTENER, INSTRUCTION PLATE 549361 (61864)	EA	4									6	6
2-O-		PLATE, INSTRUCTION 220558 (34199)	EA	1									6	7
2-F-		HOUSING, BLOWER 220562 (34199)	EA	1									6	8
--O-	306-283-0407	SCREW, ASSEMBLED WASHER HEX HD, STL, ZINC PL, 1/4-20 THD, 1/2 IN. LG X132-6 (34199)	EA	1	*	*	*	*	*	*	1	8	3	9
--O-	110-761-6882	NUT, PLAIN, HEXAGON STL, CAD. PL, 1/4-20 THD MS51967-2 (96906)	EA		EF	EF	EF	EF	EF	EF	REF	EF	3	10
2-O-		ELBOW, MUFFLER 220289 (34199)	EA	1	*	*	*	*	*	*	5	0	3	11
--O-	130-544-0597	GASKET, MUFFLER ELBOW ALSO PART OF SET FSN 2805-544-0635 220122 (34199)	EA	1	*	1	1	*	1	1	.2	.5	3	12
--O-	107-619-2441	STUD STL, 1/4-20 THD, 1.88 IN. LG 220133 (34199)	EA	2	*	*	*	*	*	*	1	0	3	13

(1) SMR CODE	(2) FEDERAL STOCK NUMBER	(3) DESCRIPTION  REF NUMBER & MFR CODE	(4) USABLE ON CODE	(5) UNIT OF MEAS	(6) 30-DAY DS MAINT ALLOWANCE	(7) 30-DAY GS MAINT ALLOWANCE	(8) 1-YR ALW PER 100 EQUIP CNTGY	(9) DEPOT MAINT ALW PER 100 EQUIP	(10) ILLUS- TRATION							
									(a)	(b)	(c)	(a)	(b)	(c)	(a)	(b)
									1-20	21-50	51-100	1-20	21-50	51-100	FIG. NO.	ITE/ NO.
		GROUP 07 - GOVERNOR LINKAGE														
--O--		SCREW, CAP HEX HD, STL, ZINC PL, 1/4-20 THD, 1 IN. LG X5-7 (34199)		EA	1	*	*	*	*	*	1	6	7	1		
--O--	5310-761-6882	NUT, PLAIN, HEXAGON STL, CAD. PL, 1/4-20 THD MS51967-2 (96906)		EA	1	REF	REF	REF	REF	REF	REF	REF	7	2		
--O--	5310-685-8308	WASHER, FLAT STL, 17/64 IN. ID, 1/2 IN. OD, 1/16 IN. THK X25-63 (34199)		EA	2	*	*	*	*	*	1	15	7	3		
!-O--		LEVER, GOVERNOR 220126 (34199)		EA	1								7	4		
!-O--	2910-789-0636	LINKAGE, GOVERNOR 220380 (34199)		EA	1	*	*	*	*	*	5	10	7	5		
-O--	5360-778-2067	SPRING, GOVERNOR 220119 (34199)		EA	1	*	1	1	*	1	12	10	7	6		
-O--	5365-594-9499	RING, RETAINING X269-13 (34199)		EA	1	*	*	*	*	*	1	8	7	7		
-O--	2990-544-0609	BUSHING, GOVERNOR 220132 (34199)		EA	1	*	*	*	*	*	5	10	7	8		
-O--		DISK ASSY, GOVERNOR REGULATING A221216 (34199)		EA	1	*	*	*	*	*	5	10	7	9		
-O--	5305-689-3965	SCREW, DRIVE STL, NO. 2 THD, 3/16 IN. LG X67-5 (34199)		EA	1	*	*	*	*	*	1	6	7	10		
----		DISK, REGULATING 220127 (34199)		EA	1								7	11		
-O--	2990-980-5123	BRACKET, SPEED CONTROL 220156 (34199)		EA	1	*	*	*	*	*	5	10	7	12		
-O--		SHAFT, GOVERNOR 220131 (34199)		EA	1								7	13		
		GROUP 08 - FUEL SYSTEM														
-O--		DECAL, CHOKE 231324 (34199)		EA	1								8	1		
-O--	5305-728-2916	SCREW, ASSEMBLED WASHER HEX HD, STL, ZINC PL, 1/4-20 THD, 3/4 IN. LG X140-1 (34199)		EA	2	*	*	*	*	*	1	16	8	2		
-O--	2910-729-9944	CARBURETOR G220517 (34199)		EA	1	*	1	1	*	1	12	8	8	3		
-O--	5330-562-1149	GASKET, CARBURETOR ALSO PART OF SET FSN 2805-544-0635 210223 (34199)		EA	1	*	1	1	*	1	12	15	8	4		
-O--		ELBOW, PIPE TO TUBE BRS, 7/16-20 THD, 1/8 EPT X447-10 (34199)		EA	2	*	*	*	*	*	1	12	8	5		
-O--		LINE ASSY, FUEL A220807 (34199)		EA	1	*	*	*	*	*	1	5	8	6		
-O--	4730-011-6452	NUT, TUBE BRS, 7/16-20 THD 1110-4 (79470)		EA	2	*	*	*	*	*	1	15	8	7		

(1) SMR CODE	(2) FEDERAL STOCK NUMBER	(3) DESCRIPTION  REF NUMBER & MFR CODE	(4) USABLE ON CODE  UNIT OF MEAS	(5) QTY INC IN UNIT	(6)			(7)			(8) 1-YR ALW PER 100 QUIP NTGY	(9) MAINT ALW PER 100 QUIP	(10) ILLUS- TRATION	
					30- a)	DS A OWAI (b)	INT E (c)	30- a)	GS OY (b)	MAINT E (c)			FIG. NO.	TEM NO.
					-20	1-50	1-100	-20	1-5	1-100				
2-O-		STRAP ASSY, TANK A234167 (34199)	EA	1	*	*	*	*	*	*	5	10	8	8
--O-		SCREW, CAP HEX HD, STL, ZINC PL, 1/4-20 THD 1-1/4 IN. LG 50883 (05748)	EA	1	*	*	*	*	*	*	1	20	8	9
--O-	310-824-9399	NUT, SELF-LOCKING, HEXAGON STL, 1/4-20 THD 1222007-383 (94135)	EA	1	*	*	*	*	*	*	1	20	8	10
1----		STRAP, TANK 230160 (34199)	EA	1									8	11
--O-	910-952-2183	FILTER, FUEL A220805 (34199)	EA	1	1	1	2	1	1	2	2	25	8	12
1----		BAIL 221138 (34199)	EA	1									8	13
--O-		GASKET, BOWL 220881 (34199)	EA	1	1	1	2	1	1	2	25	30	8	14
--O-		ELEMENT, STRAINER 220880 (34199)	EA	1	1	1	2	1	1	2	25	30	8	15
1----		BOWL 220879 (34199)	EA	1									8	16
--O-	730-684-4208	NIPPLE, PIPE BLACK IRON, 1/8 IN. EPT, 3/4 IN. LG X217-6 (34199)	EA	1	*	*	*	*	*	*	*	8	8	17
1----		STRAINER 220526 (34199)	EA	1									8	18
2-O-		FUEL TANK 220527 (34199)	EA	1	*	*	*	*	*	*	5	10	8	19
2-O-		BRACKET ASSY, TANK A221254 (34199)	EA	1	*	*	*	*	*	*	5	10	8	20
1----		WEBBING, TANK 220166 (34199)	EA	2									8	21
1----		BRACKET, TANK 221252 (34199)	EA	1									8	22

(1) SM COT	(2) FEDERAL STOCK NUMBER	(3) DESCRIPTION  REF NUMBER & MFR CODE	(4) USABL ON CODE	(5) QTY IN LN	(6) UNIT PRICE			(7) 30-DAY GS MAINT ALLOWANCE			(8) 1-YR ALN PER 100 QU INT	(9) DEP MAIN ALY PER 100 QU INT	(10) I T ON		
					(a)	(b)	(c)	(a)	(b)	(c)			(a)	(b)	
					1-2	11-	1-10	1-	11-	51-1			FI	TE	
		GROUP 09 - AIR CLEANER AND MOUNTING													
P--C		NUT, WING STL, 1/4-20 THD JZM001731T (77122)	EA	1	*	*	*	*	*	*	1	6	9	1	
P2-C	2940-371-4584	AIR CLEANER, INTAKE H40-9385 (78940)	EA	1	*	*	*	*	*	*	5	25	9	2	
P--C		GASKET, AIR CLEANER 210469 (34199)	EA	1	*	1	2	*	1	2	18	15	9	3	
P--C	310-761-6882	NUT, PLAIN, HEXAGON STL, CAD. PL, 1/4-20 THD MS51967-2 (96906)	EA	1	E	E	EF	EF	EF	EF	3E	3EF	9	4	
P--C	310-637-9541	WASHER, LOCK STL, CAD. PL, 1/4 IN., MED MS35338-46 (34199)	EA	1	E	E	EF	EF	EF	EF	3E	3EF	9	5	
P--C	310-685-8308	WASHER, FLAT STL, 17/64 IN. ID, 1/2 IN. OD, 1/16 IN. THK X25-63 (34199)	EA	1	E	E	EF	EF	EF	EF	3E	3EF	9	6	
P--O	305-984-6200	SCREW, MACHINE PAN HD, STL, CAD. PL, NO. 8-32 THD, 1-3/4 IN. LG MS35206-252 (96906)	EA	2	*	*	*	*	*	*	1	10	9	7	
P--O	310-855-2417	WASHER, LOCK STL, NO. 8, MED X18-2 (34199)	EA	2	*	*	*	*	*	*	1	10	9	8	
2-O		ELBOW ASSY, CLEANER A221174 (34199)	EA	1									9	9	
P--O	307-818-1257	STUD STL, 1/4-20 THD, 7 IN. LG 220069 (34199)	EA	1	*	*	*	*	*	*	1	4	9	10	
2-O		ELBOW, CLEANER 220173 (34199)	EA	1									9	11	
P--O	330-585-1494	GASKET, CLEANER ELBOW ALSO PART OF SET FSN 2805-544-0635 220537 (34199)	EA	1	*	*	*	*	*	*	5	4	9	12	
--O	5306-283-0407	SCREW, ASSEMBLED WASHER HEX HD, STL, ZINC PL, 1/4-20 THD, 1/2 IN. LG K132-6 (34199)	EA	1	EF	EF	EF	EF	EF	EF	EF	EF	EF	9	13
2-O		BRACE, CLEANER ELBOW 220371 (34199)	EA	1									9	14	
		GROUP 10 - BREATHER													
--O	5310-761-6882	NUT, PLAIN, HEXAGON STL, CAD. PL, 1/4-20 THD MS51967-2 (96906)	A	1	EF	EF	EF	EF	EF	EF	EF	EF	EF	0	1
--O	5310-637-9541	WASHER, LOCK STL, CAD. PL, 1/4 IN., MED MS35338-46 (96906)	A	1	EF	EF	EF	EF	EF	EF	EF	EF	EF	0	2
2-O		COVER, BREATHER 20358 (34199)	A	1									0	3	
--O	2940-428-3506	FILTER, BREATHER 10256 (34199)	A	1	*		1				2	8	0	4	

(1) SMR CODE	FEDERAL STOCK NUMBER	(3) DESCRIPTION  EF NUMBER & MFR CODE	4) USABLE ON CODE	(5) TY JC N IT	(6) 10-DAY DS ALLOWA			(7) 30-DAY GS DW/			8) YR LW ER 10 UIP TGY	(9) EPOT AINT LW ER 00 UIP	(10) LL TR N	
					a)	b)	c)	a)	b)	c)			G.	EM
					20	-50	-100	20	-50	100			3.	3.
P--O--	5340-724-4349	BUSHING, RUBBER ALSO PART OF SET FSN 2805-544-0635 220369 (34199)	EA	1	*	1	1	*	1		2	15	.0	5
C2-O--		REED 220379 (34199)	EA	1									.0	6
P--O--	2805-573-9996	GASKET, BREATHER PLATE ALSO PART OF SET FSN 2805-544-0635 220370 (34199)	EA	2	*	1	1	*	1				.0	7
C2-O--		PLATE, BREATHER 221250 (34199)	EA	1									.0	8
P--O--	5307-778-2131	STUD STL, 1/4-20 THD, 2-9/16 IN. LG 220368 (34199)	EA	1	*	*	*	*	*	*	1	6	.0	9
		GROUP 11 - FLYWHEEL AND MAGNETO												
P--O--	2990-585-3920	ROPE, STARTER A220090 (34199)	EA	1	2	5	0	2	5	)	15	100	.11	1
C2-O--		RETAINER, SCREEN 220113 (34199)	EA	1									.11	2
C2-O--		SCREEN 220098 (34199)	EA	1									.11	3
P--O--	5310-584-5029	NUT, SELF-LOCKING, HEXAGON STL, ZINC PL, 7/16-20 THD X119-9 (34199)	EA	1	*	*	*	*	*	*	1	10	.11	4
P--O--	5310-209-0965	WASHER, LOCK STL, CAD. PL, 7/16 IN., MED MS35338-47 (96906)	EA	1	*	*	*	*	*	*	1	10	.11	5
P--O--		PULLEY, STARTER 220150 (34199)	EA	1	*	1	1	*	1	1	12	10	.11	6
K2-F--		FLYWHEEL B220636 (34199)	EA	1									.11	7
P--F--		KEY, WOODRUFF 405 (80204)	EA	1	*	*	*	*	*	*	1	10	.11	8
P--F--		SCREW, MACHINE X50-12 (34199)	EA	2	*	*	*	*	*	*	1	25	.11	9
P--F--	5310-576-5752	WASHER, LOCK STL, CAD. PL, NO. 10. INT TOOTH MS35333-39 (96906)	EA	2	*	*	*	*	*	*	1	25	.11	10
K2-F--		STATOR ASSY A220409 (34199)	EA	1									.11	11
P--F--		SCREW, MACHINE NO. 4-36 THD, 1/4 IN. LG X49-12 (34199)	EA	1	*	*	*	*	*	*	1	8	.11	12
P--F--		SCREW, MACHINE NO. 6-32 THD, 1/4 IN. LG X52-14 (34199)	EA	1	*	*	*	*	*	*	1	10	.11	13
P--F--	2920-778-2075	COIL, MAGNETO FG2145 (00818)	EA	1	*	1	1	*	1	1	15	10	.11	14
P--F--	5305-984-6191	SCREW, MACHINE PAN HD, STL, CAD. PL, NO. 8-32 THD, 1/4 IN. LG MS35206-243 (96906)	EA	1	*	*	*	*	*	*	1	10	.11	15
P--F--	5910-765-8550	CAPACITOR FG2138 (00818)	EA	1	1	1	2	1	1	2	25	15	.11	16



(1) SMR CODE	(2) FEDERAL STOCK NUMBER	(3) DESCRIPTION  REF NUMBER & MFR CODE	(4) USABLE ON CODE	(5) QTY INC IN JNIT	(6) 30-DAY DS MAINT ALLOWANCE			(7) 30-DAYS MAINT ALLOWANCE			(8) 1-YR ALLOW PER 100 QUIP NTGY	(9) DEPOT MAINT ALW PER 100 QUIP	(10) ILL TR. DN	
					(a)	(b)	(c)	(a)	(b)	(c)			(a)	(b)
					-20	1-50	1-100	1-20	1-50	1-100			FIG.	ITEM NO.
		GROUP 12 -IGNITION												
1--F-	5305-429-1188	SCREW, ASSEMBLED WASHER FIL HD, STL, ZINC PL, NO. 10-24 THD, 3/8 IN. LG X131-1 (34199)	EA	4	*	*	*	*	*	*	1	20	12	1
2-F-		COVER ASSY, BREAKER A220136 (34199)	EA	1									12	2
2-O-		SPRING, STOP BUTTON 220045 (34199)	EA	1									12	3
2-O-		BUTTON, STOP 220044 (34199)	EA	1									12	4
1---		COVER, BREAKER 220175 (34199)	EA	1									12	5
1--F-	5330-573-9992	GASKET, BREAKER COVER ALSO PART OF SET FSN 2805-544-0635 220174 (34199)	EA	1	1	1	2	1	1	2	24	20	12	6
1--F-	5310-550-1130	WASHER, LOCK STL, CAD. PL, 1/4 IN., INT TEETH MS35333-40 (96906)	EA	2	EF	REF	EF	EF	EF	EF	EF	REF	12	7
1--F-	2920-564-2508	BREAKER ASSY A220474 (34199)	EA	1	1	1	3	1	1	3	30	25	12	8
1--F-		SCREW, ASSEMBLED WASHER STL, NO. 8-32 THD. 1/4 IN. LG X155-1 (34199)	EA	1	*	*	*	*	*	*	1	10	12	9
1---		POINTS, BREAKER 220475 (34199)	EA	1									12	10
1---		BRACKET, BREAKER 220476 (34199)	EA	1									12	11
1--F-	2920-758-2177	LEAD, ELECTRICAL A220532 (34199)	EA	1	*	1	1	*	1	1	12	8	12	12
2-F-	5315-790-7833	ROD, BREAKER X489-1 (34199)	EA	1	*	*	*	*	*	*	5	10	12	13
		GROUP 13 -CYLINDERHEAD, VALVES, AND PISTON												
1--O-	2920-758-2173	CABLE, SPARK PLUG A220798 (34199)	EA	1	*	1	1	*	1	1	12	15	13	1
1--O-	2920-288-3126	SPARK PLUG XMJ14 (11583)	EA	1	6	11	3	6	11	3	275	100	13	2
1--O-	5306-226-4829	BOLT, MACHINE HEX HD, STL, CAD. PL, 5/16-18 THD, 1-1/4 IN. LG MS90728-36 (96906)	EA	6	*	*	*	*	*	*	1	60	13	3
1--O-	5310-778-0261	WASHER, FLAT STL, 21/64 IN. ID, 23/32 IN. OD, 1/8 IN. THK 220534 (34199)	EA	6	*	*	*	*	*	*	1	60	13	4

(1) SMR CODE	(2) FEDERAL STOCK NUMBER	(3) DESCRIPTION  EF NUMBER & MFCODE	(4) USABLE ON CODE	(5) UNIT OF MEAS	(6)			(7)			(8) -YR LW 'ER 00 DUJIP DTGY	(9) EPOT 'LW 'ER 00 DUJIP	(10)	
					10-	DS OWA	NT E	30-i	GS OW/	NT E			ILL TR/	JN
					a)	b)	(c)	a)	(b)	(c)			a)	b)
P--O--	2805-738-7505	HEAD ASSY, CYLINDER A220796 (34199)	EA	L	*	1	1	*	1	1	12	15	13	5
K1----		INSERT, SCREW THREAD 235014 (34199)	EA	L									13	6
K1----		HEAD, CYLINDER 220795 (34199)	EA	L									13	7
P--O--		GASKET, CYLINDER HEAD ALSO PART OF SET FSN 2805-544-0635 220124 (34199)	EA	L	1	1	2	1	1	2	24	30	13	8
P--F--	5315-442-6076	PIN, VALVE SPRING LOCK 220052 (34199)	EA	2	*	1	1	*	1	1	12	10	13	9
P--F--	2805-544-0596	VALVE, EXHAUST 220096 (34199)	EA	1	*	1	1	*	1	1	12	20	13	10
P--F--		VALVE, INTAKE 220540 (34199)	EA	1	*	1	1	*	1	1	12	15	13	11
P--F--	2805-616-4375	SPRING, VALVE 220168 (34199)	EA	2	*	1	2	*	1	2	20	20	13	12
P--F--	2805-544-0672	ROTATOR, VALVE FRRA83A (06947)	EA	2	*	1	2	*	1	2	20	20	13	13
P--H--	2805-754-2348	LOCK, CONNECTING ROD SCREWS 220492 (34199)	EA	1				1	1	2	25	10	13	14
P--H--		CONNECTING ROD ASSY B220070 (34199)	EA	1				1	1	2	25	12	13	15
K1----		RING, PISTON PART OF SET FSN 2805-930-8194 220176 (34199)	EA	1									13	16
K1----		RING, PISTON PART OF SET FSN 2805-930-8194 220181 (34199)	EA	1									13	17
K1----		RING, PISTON PART OF SET FSN 2805-930-8194 220186 (34199)	EA	1									13	18
P--H--	2805-544-0432	PISTON ASSY A220103 (34199)	EA	1				*	1	1	12	20	13	19
K1----		RETAINER, PISTON PIN LR57-2 (77535)	EA	2									13	20
K1----		PIN, PISTON 220003 (34199)	EA	1									13	21
K1----		PISTON 220102 (34199)	EA	1									13	22
		CONNECTING ROD SUBASSY A221262 (34199)	EA	1									13	23
P--H--	5305-799-0891	SCREW, CAP HEX HD, STL, 1/4-28 THD, 1-3/16 IN. LG 220491 (34199)	EA	2				*	*	*	1	8	13	24
P--H--		WASHER, FLAT STL, 17/64 IN. ID, 1/2 IN. OD, 1/16 IN. THK X25-35 (34199)	EA	2				*	*	*	1	20	13	25
K1----		CONNECTING ROD 220490 (34199)	EA	1									13	26

(1) SMR CODE	(2) FEDERAL STOCK NUMBER	(3) DESCRIPTION  REF NUMBER & MFR CODE	(4) USABLE ON CODE	(5) UNIT OF MEAS	(6) 30-DAY DS MAINT ALLOWANCE	(7) 30-DAY GS MAINT ALLOWANCE			(8) 1-YR ALW PER 100 EQUIP CNTGY	(9) DEPOT MAINT ALW PER 100 EQUIP	(10) ILLUS- TRATION					
						(a)	(b)	(c)			(a)	(b)	(c)	(a)	(b)	
						1-20	21-50	51-100			1-20	21-50	51-100	FIG. NO.	ITEM NO.	
		GROUP 14 - CYLINDER BLOCK, CRANK- SHAFT, AND OIL PAN														
2-O		DIPSTICK 220092 (34199)		EA	1						14	1				
1-O	4730-724-6067	PLUG, PIPE, MAGNETIC STL, 3/8 IN. NPTF X305-4 (34199)		EA	1	*	*	*	*	*	1	10	14	2		
1-H	5306-728-2917	BOLT, ASSEMBLED WASHER HEX HD, STL, ZINC PL, 5/16-18 THD, 7/8 IN. LG X154-i (34199)		EA	4				*	*	*	1	20	14	3	
2-H		OIL PAN 220520 (34199)		EA	1								14	4		
1----		GASKET, OIL PAN PART OF SET FSN 2805-544-0635 220157 (34199)		EA	1								14	5		
1-F	5305-958-5245	SCREW, CAP FH, STL, CAD. PL, 1/4-20 THD, 5/8 IN. LG MS35190-288 (96906)		EA	4	REF	REF	REF	REF	REF	REF	REF	REF	REF	14	6
1-F	5310-550-1130	WASHER, LOCK STL, CAD. PL, 1/4 IN., INT TEETH MS35333-40 (96906)		EA	4	REF	REF	REF	REF	REF	REF	REF	REF	REF	14	7
1-F	5310-298-8704	WASHER, FLAT COPPER, 0.266 IN. ID, 0.500 IN. OD, 0.062 IN. THK X25-55 (34199)		EA	4	*	*	*	*	*	*	1	25	15	8	
2-F		PLATE ASSY, BEARING A221195 (34199)		EA	1									14	9	
1----		BEARING, BALL 3205LR1A (43334)		EA	1									14	10	
1----		PLATE, BEARING 220799 (34199)		EA	1									14	11	
1----		GASKET, BEARING PLATE PART OF SET FSN 2805-544-0635 220071 (34199)		EA	1									14	12	
1-F	5330-756-1392	SEAL, FRONT OIL 65193WH (79150)		EA	1	1	1	2	1	1	2	25	15	14	13	
1-F		CRANKSHAFT 220426 (34199)		EA	1	*	1	2	*	1	2	20	15	14	14	
1----		BEARING, BALL 3205LR1A (43334)		EA	1									14	15	
1-F	5330-585-8283	SEAL, REAR OIL 65200WH (79150)		EA	1	1	1	2	1	1	2	25	15	14	16	
1-F	5315-544-0574	PIN, CAMSHAFT 220053 (34199)		EA	1	*	*	*	*	*	*	12	10	14	17	
1-F	2805-646-6961	CAMSHAFT ASSY A220140 (34199)		EA	1	*	1	1	*	1	1	12	10	14	18	
1-F	5365-574-2284	RING, RETAINING 220242 (34199)		EA	1	*	1	2	*	1	2	20	15	14	19	
1-F	2805-778-2073	COLLAR, GOVERNOR THRUST 220128 (34199)		EA	1	*	1	1	*	1	1	12	10	14	20	

(1) SMR CODE	(2) FEDERAL STOCK NUMBER	(3) DESCRIPTION  REF NUMBER & MFR CODE	(4) USABLE ON CODE	(5) UNIT OF MEAS	QTY INC IN UNIT	(6) 30-DAY DS MAINT ALLOWANCE			(7) 30-DAY GS MAINT ALLOWANCE			(8) 1-YR ALW PER 100 EQUIP CNTGY	(9) DEPOT MAINT ALW PER 100 EQUIP	(10) ILLUS- TRATION	
						(a)	(b)	(c)	(a)	(b)	(c)			(a)	(b)
						1-20	21-50	51-100	1-20	21-50	51-100			FIG. NO.	ITEM NO.
--F--		BALL STL, 7/16 IN. DIA X212-2 (34199)		EA	4	*	1	1	*	1	1	12	8	14	21
--F--		RIVET FLAT HD, STL, ZINC PL, 0.125 IN. DIA, 0.375 IN. LG X61-41 (34199)		EA	2	*	1	2	*	1	2	18	20	14	22
--F--	2990-799-0819	RETAINER, BALL 220125 (34199)		EA	1	*	1	1	*	1	1	15	18	14	23
--F--		CAMSHAFT 220116 (34199)		EA	1	*	1	1	*	1	1	12	10	14	24
--F--	2805-544-0559	TAPPET, VALVE 220013 (34199)		EA	2	1	1	2	1	1	2	25	26	14	25
2-H--		BLOCK ASSY, CYLINDER A220919 (34199)		EA	1									14	26
--H--	2805-728-3736	INSERT, EXHAUST VALVE 220139 (34199)		EA	1				*	1	1	15	12	14	27
--H--	2805-724-6061	INSERT, INTAKE VALVE 220549 (34199)		EA	1				*	1	1	15	12	14	28
--H--	5340-576-8985	PLUG, EXPANSION X230-1 (34199)		EA	1				*	*	*	1	6	14	29
1----		BLOCK, CYLINDER 220430 (34199)		EA	1									14	30
		GROUP 15 - KITS AND SETS													
--O--	4930-904-1383	PARTS KIT, NOZZLE REPAIR H4126 (81718) 1 POPPET 1 DISK 1 NUT 1 PACKING		EA	1	4	8	16	4	8	16	195	200		
														3	18
														3	20
														3	24
														3	27
--F--	2805-544-0635	GASKET SET, ENGINE 220151 (34199) 1 GASKET 1 GASKET 1 GASKET 1 BUSHING 1 GASKET 1 GASKET 1 GASKET 1 GASKET 1 GASKET 1 GASKET		EA	1	2	5	10	2	5	10	115	100		
														6	12
														8	4
														9	12
														10	5
														10	7
														12	6
														13	8
														14	5
														14	12
--H--	2805-930-8194	RING SET, PISTON 220801 (34199) 1 RING 1 RING 1 RING		EA	1				2	4	8	90	100		
														13	16
														13	17
														13	18

**Section III. SPECIAL TOOLS, TEST, AND SUPPORT  
EQUIPMENT - NOT APPLICABLE**

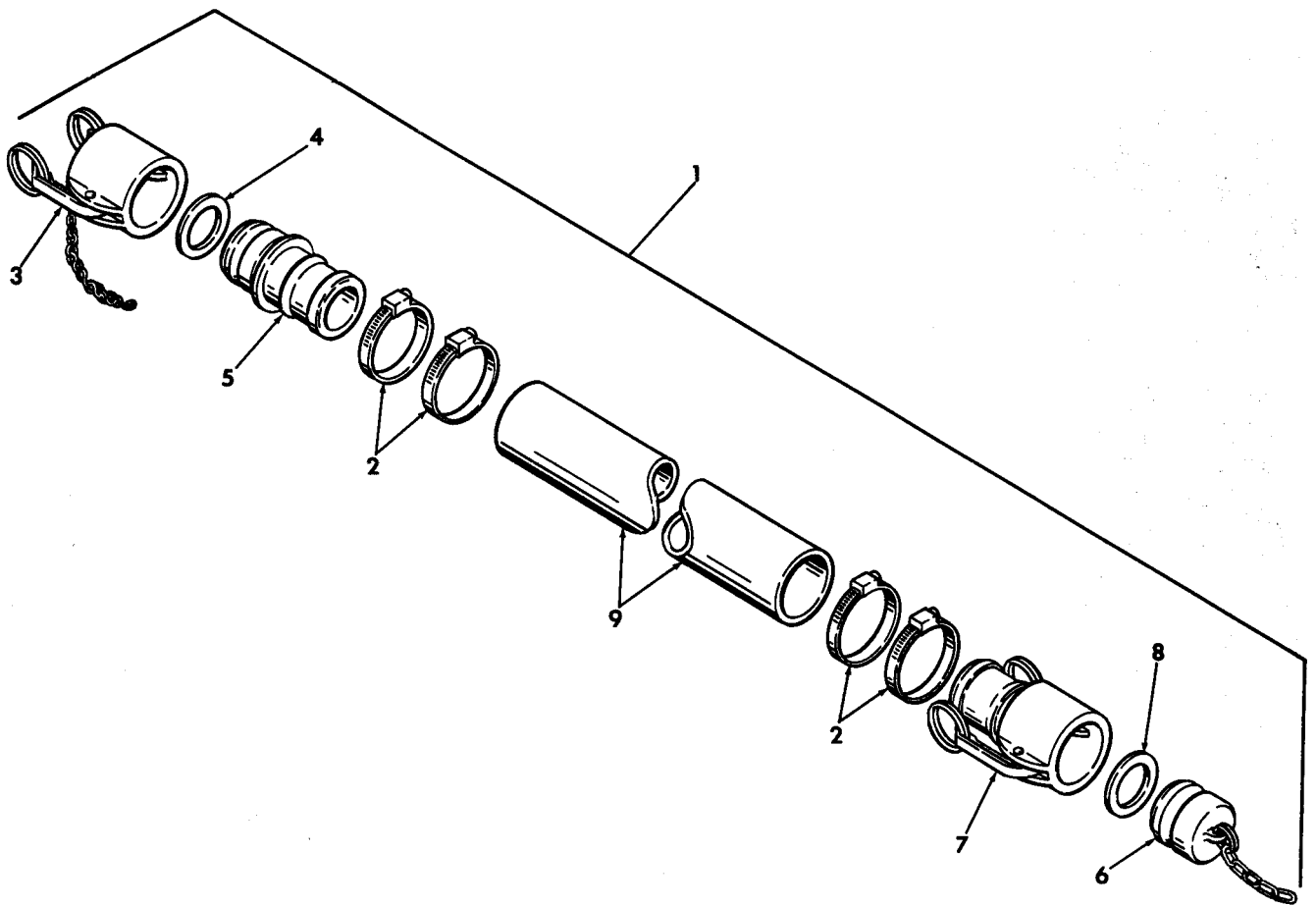


Figure 1. Suction hose assembly

ME 4320-259-35P/1

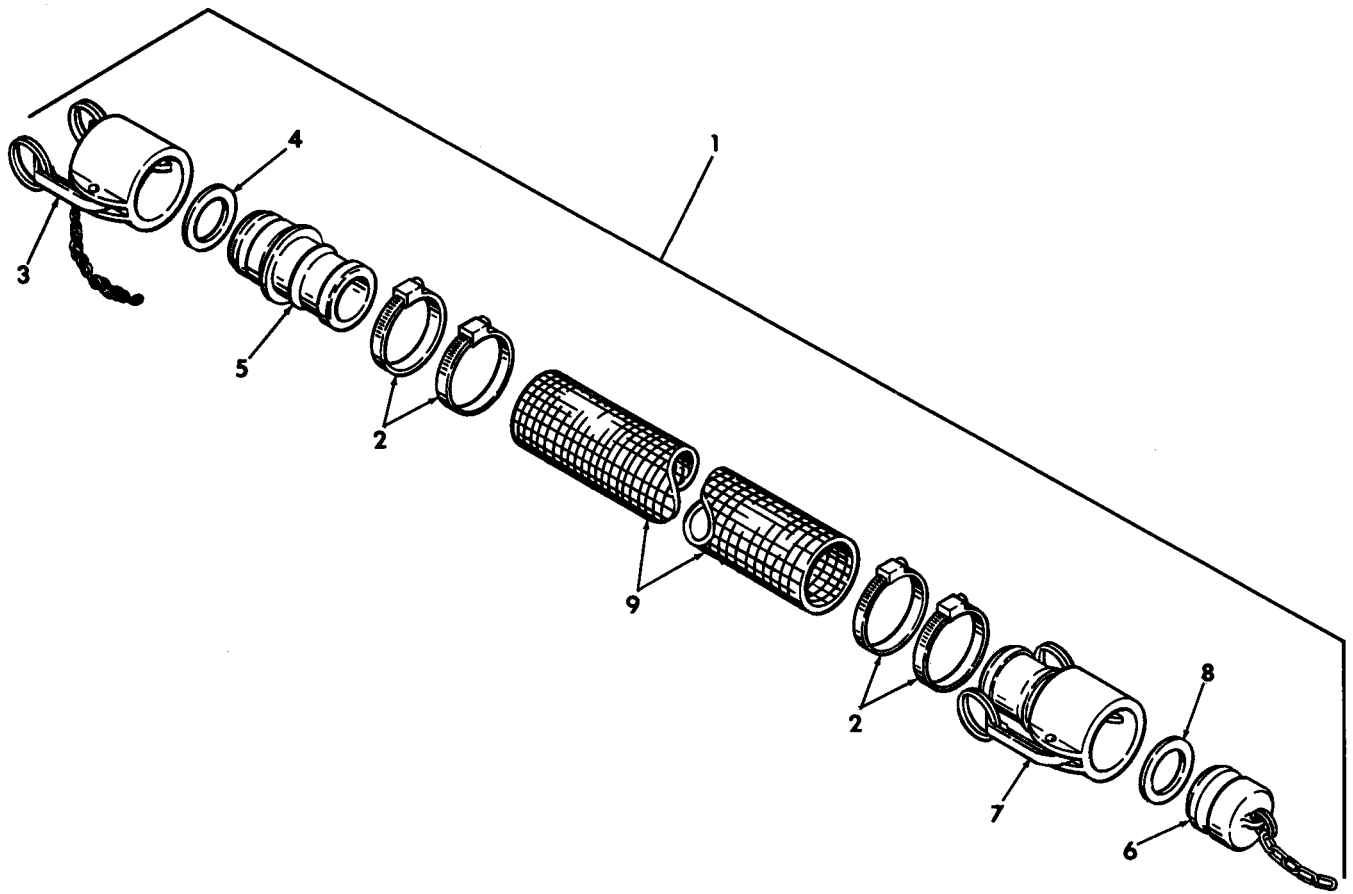


Figure 2. Discharge hose assembly

ME 4320-259-359/2

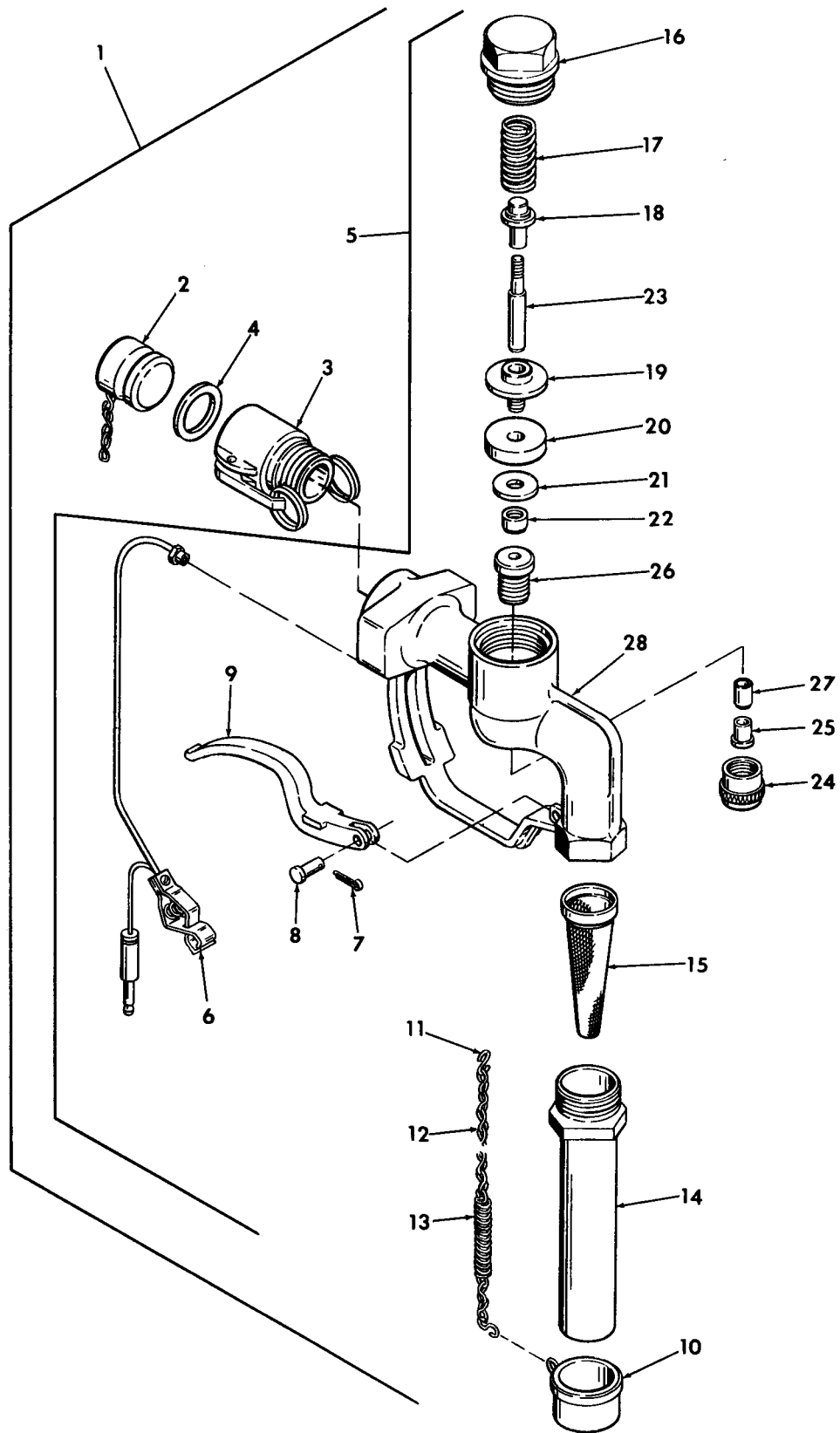
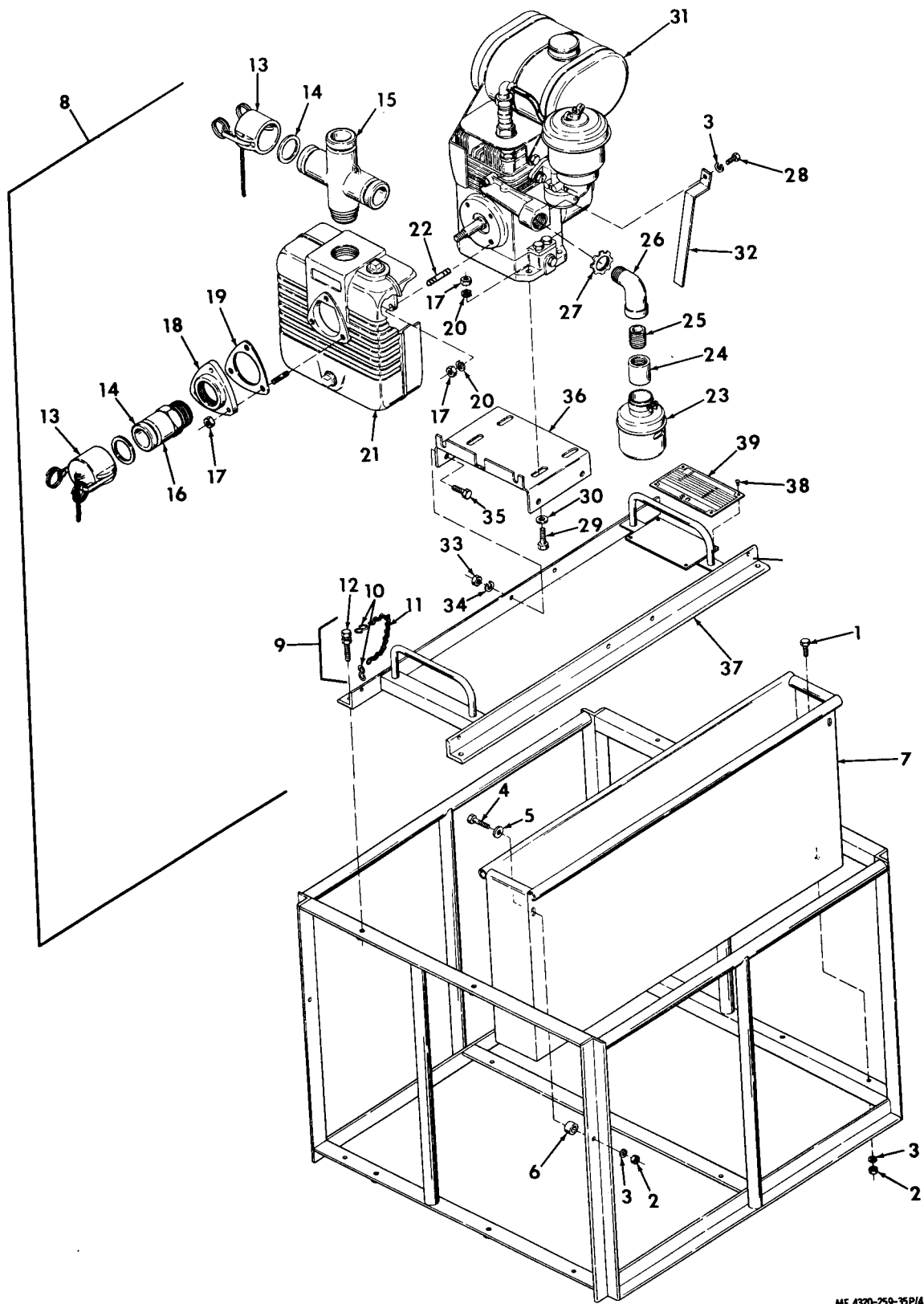


Figure 3. Nozzle assembly

ME 4320-259-35P/3





ME 4320-259-35P1/4

Figure 4. Pumping unit and frame

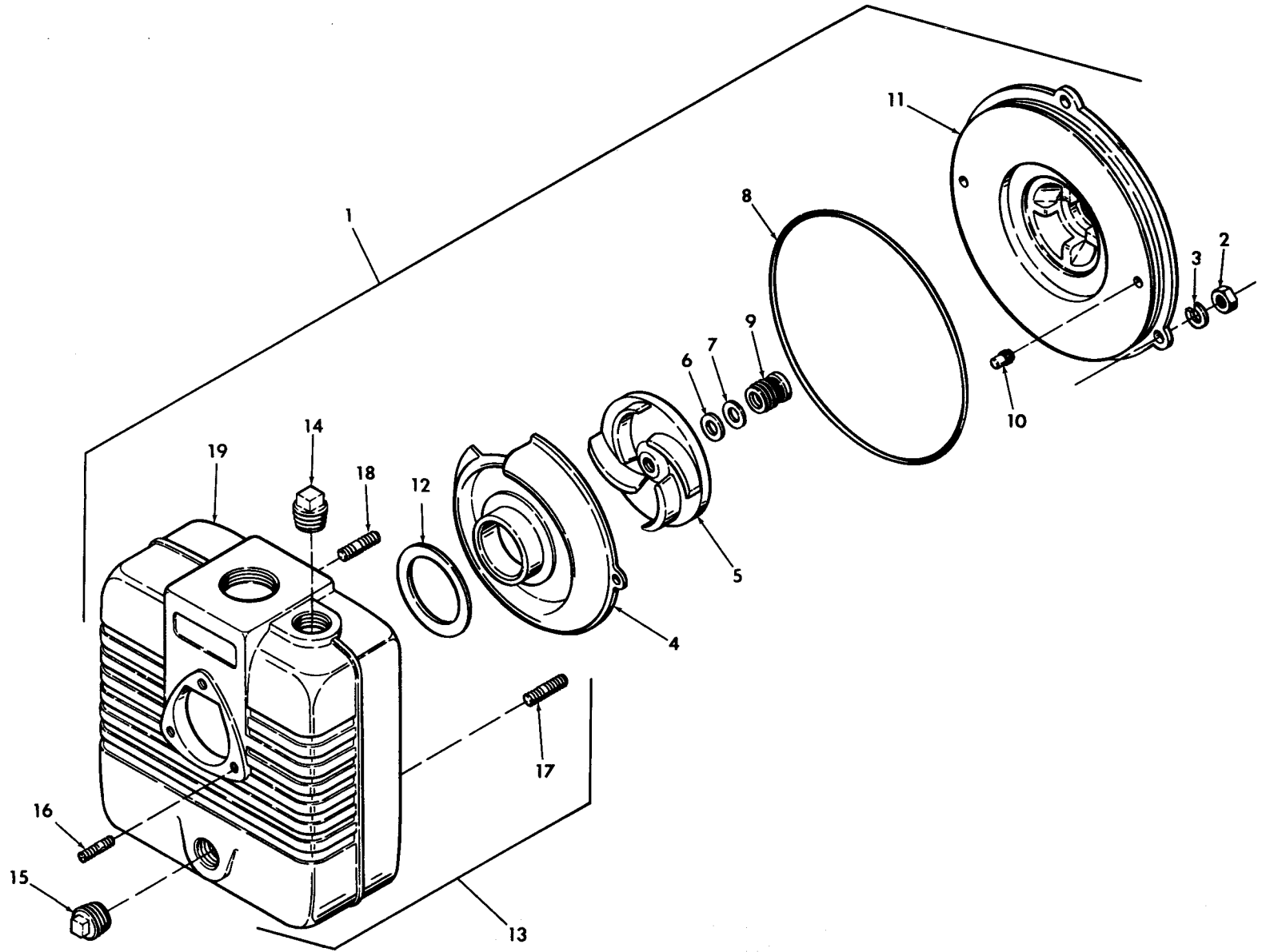
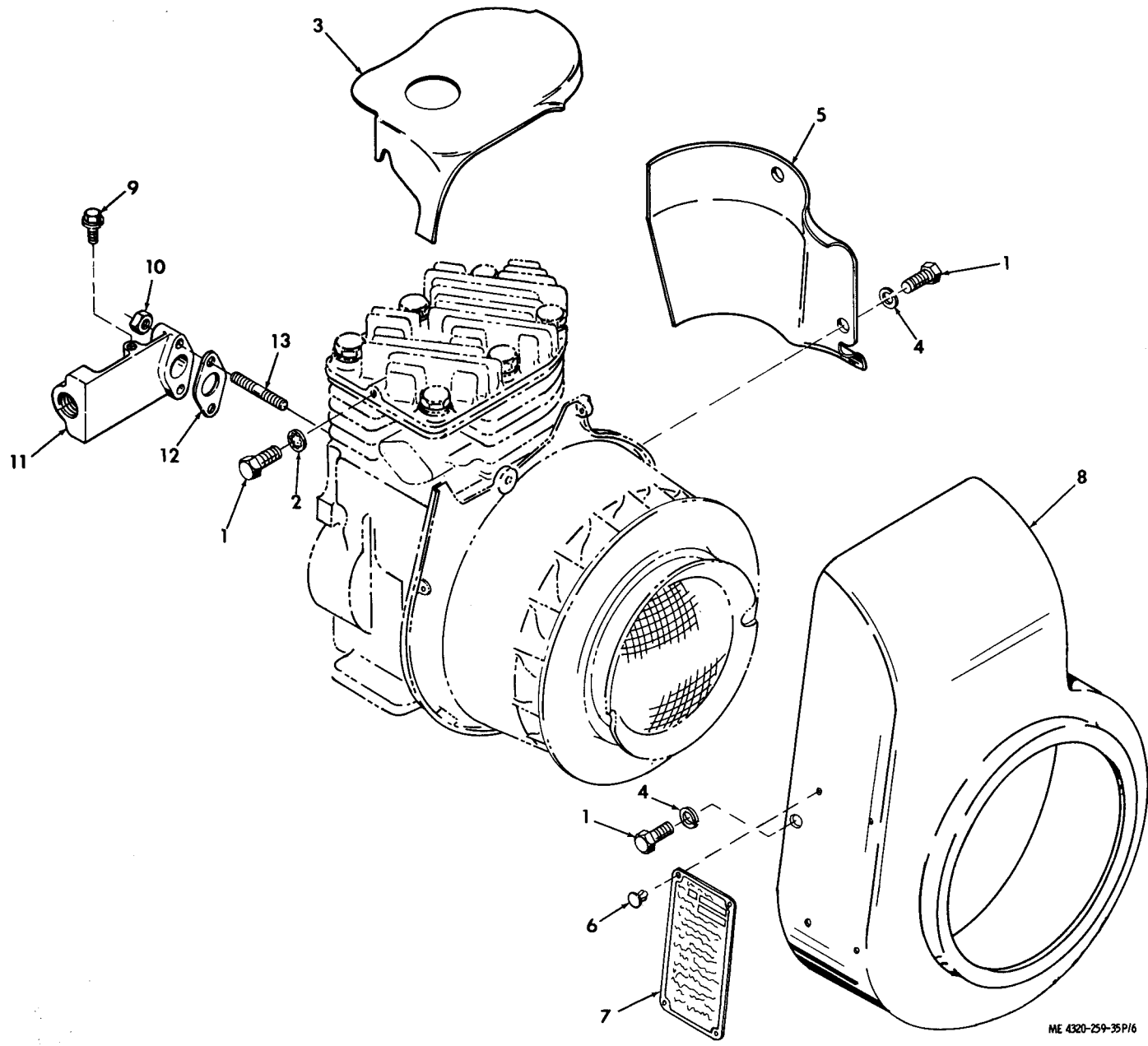
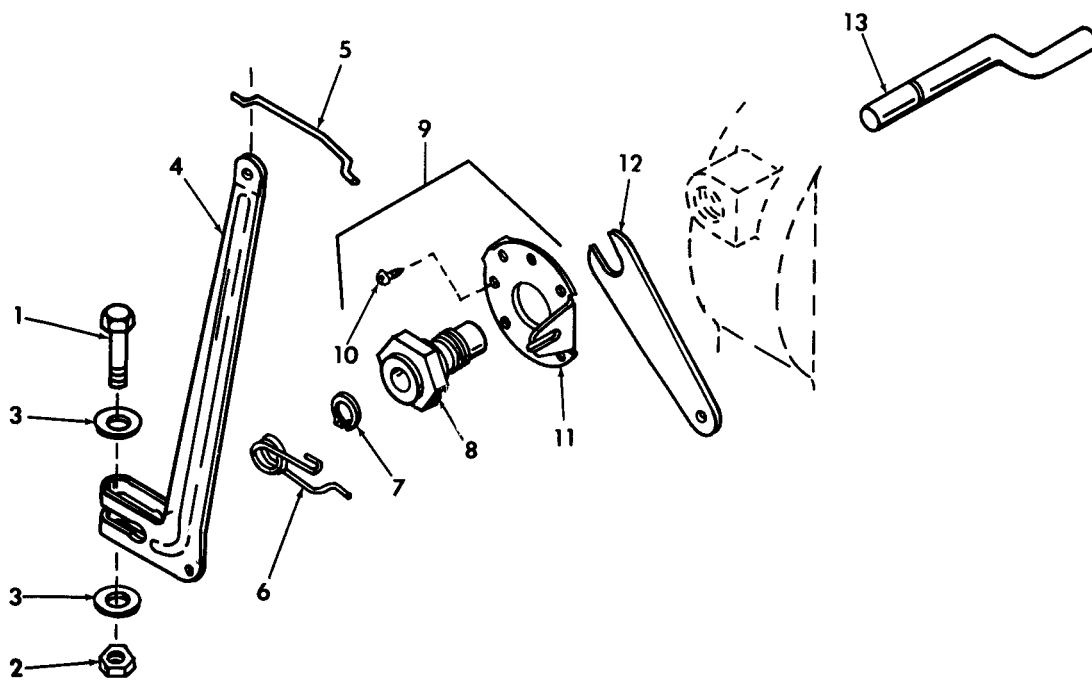


Figure 5. Pump assembly



ME 4320-259-35P/6

Figure 6. Air baffles and exhaust elbow



ME 4320-259-35P17

Figure 7. Governor linkage

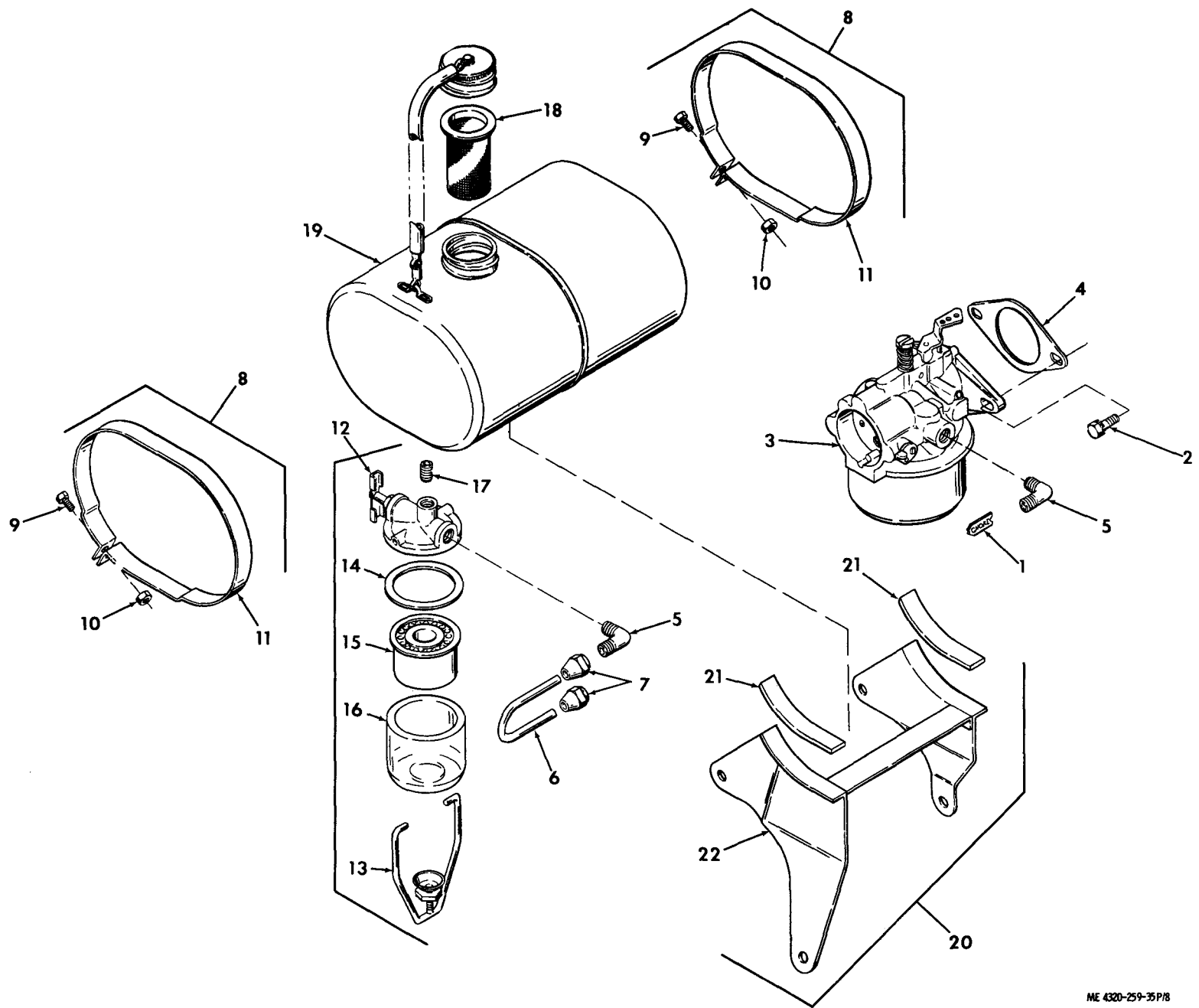
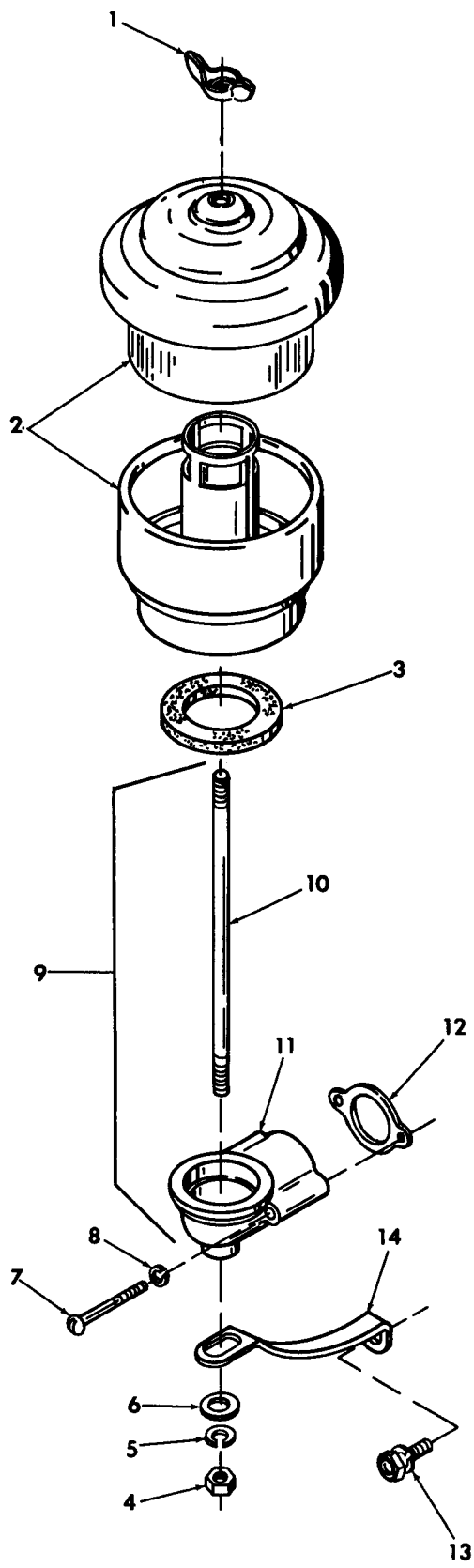


Figure 8. Fuel system

ME 4320-259-35 P/8



ME 4320-259-35P/9

Figure 9. Air cleaner and mounting

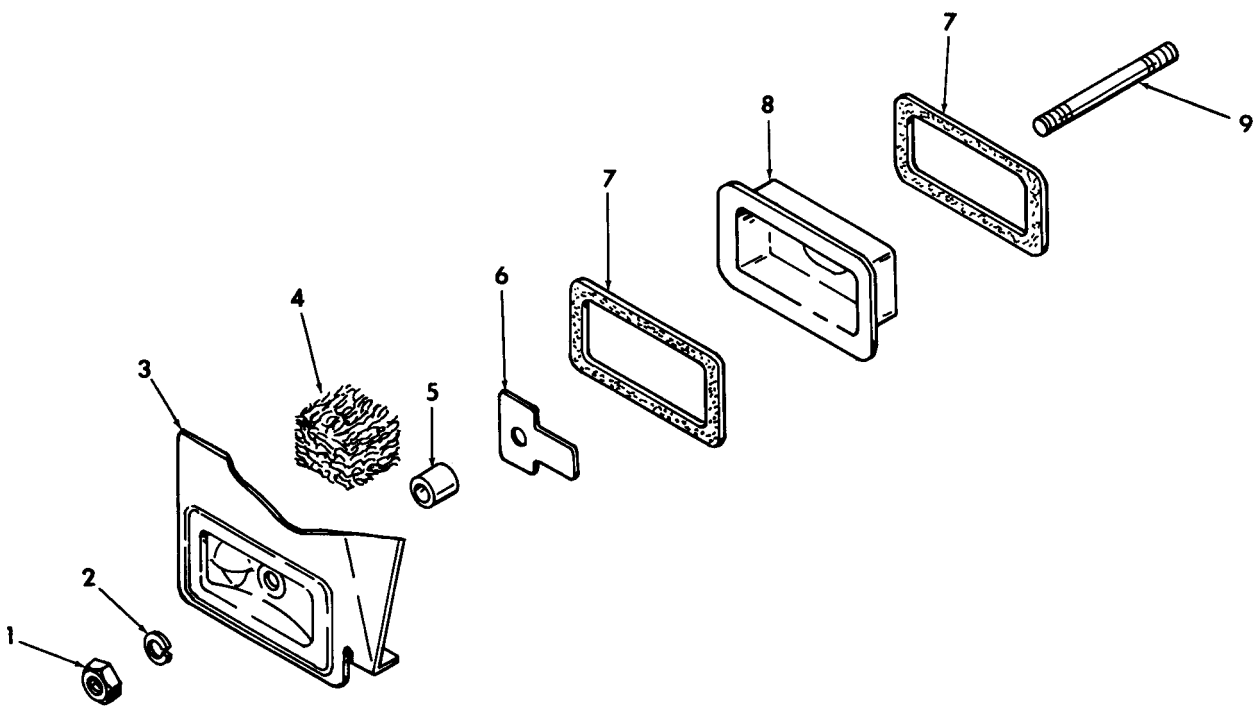
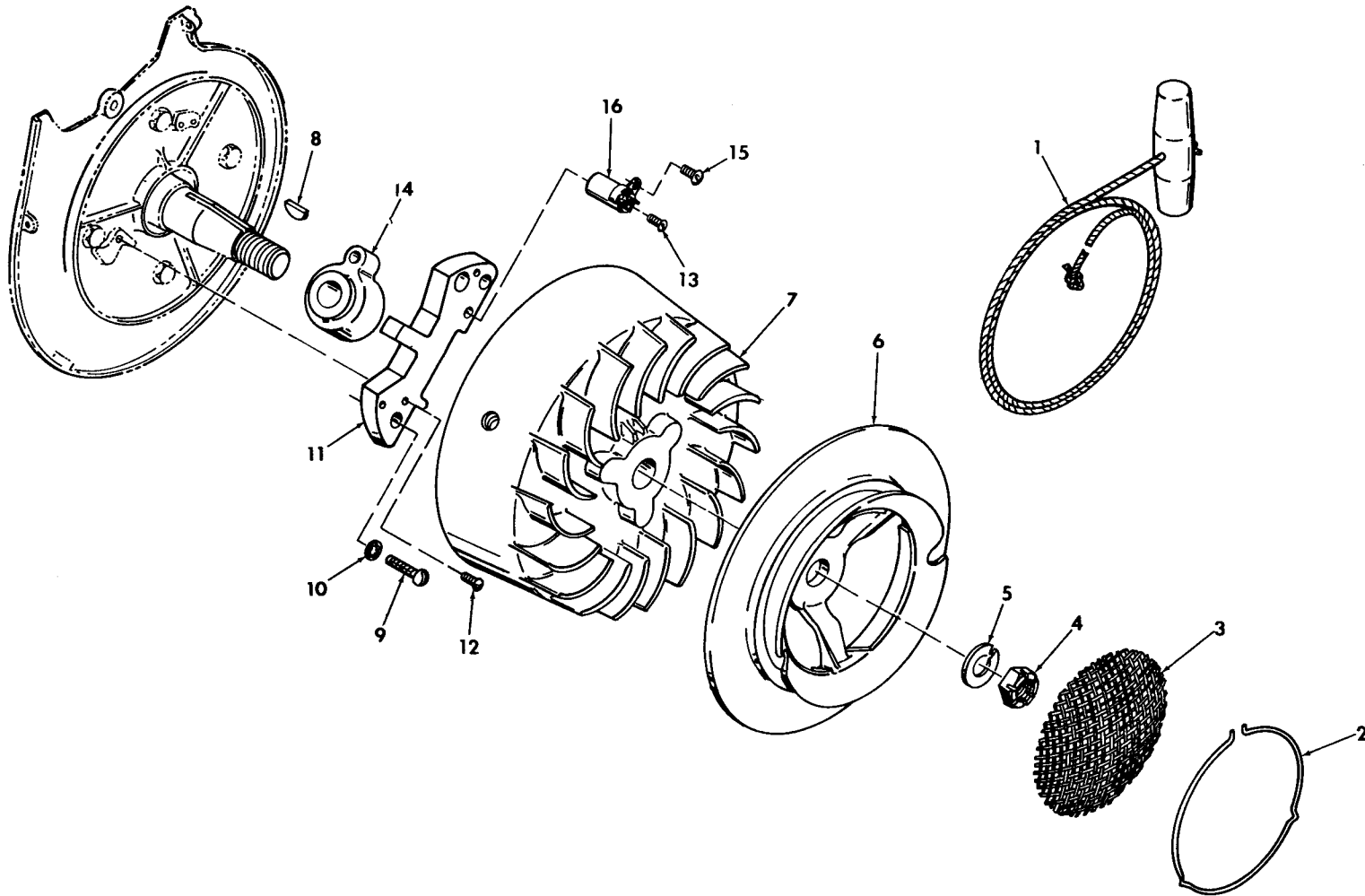


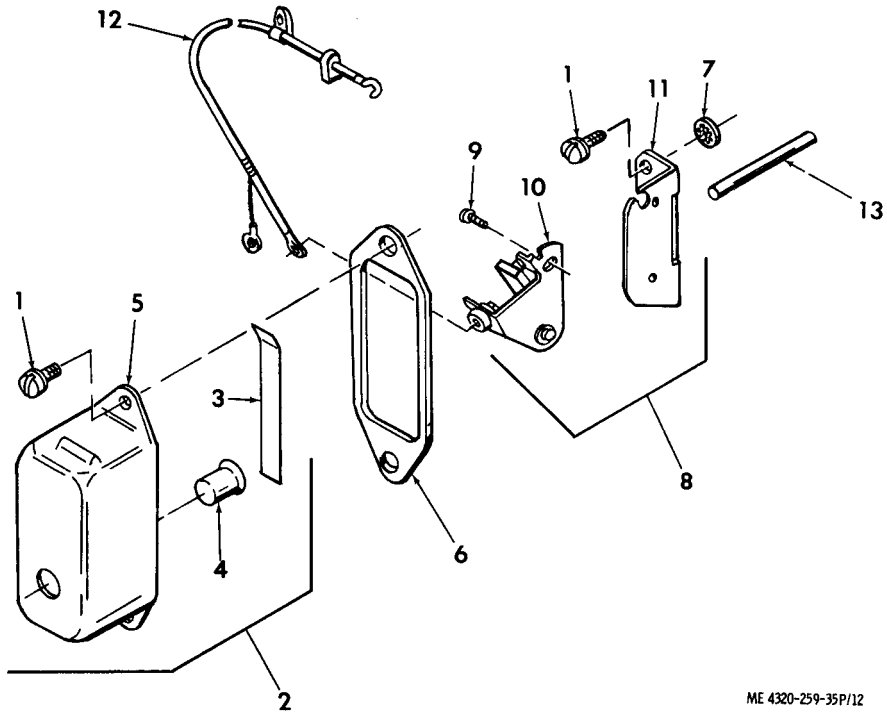
Figure 10. Breather



ME 4320-259-35P/11

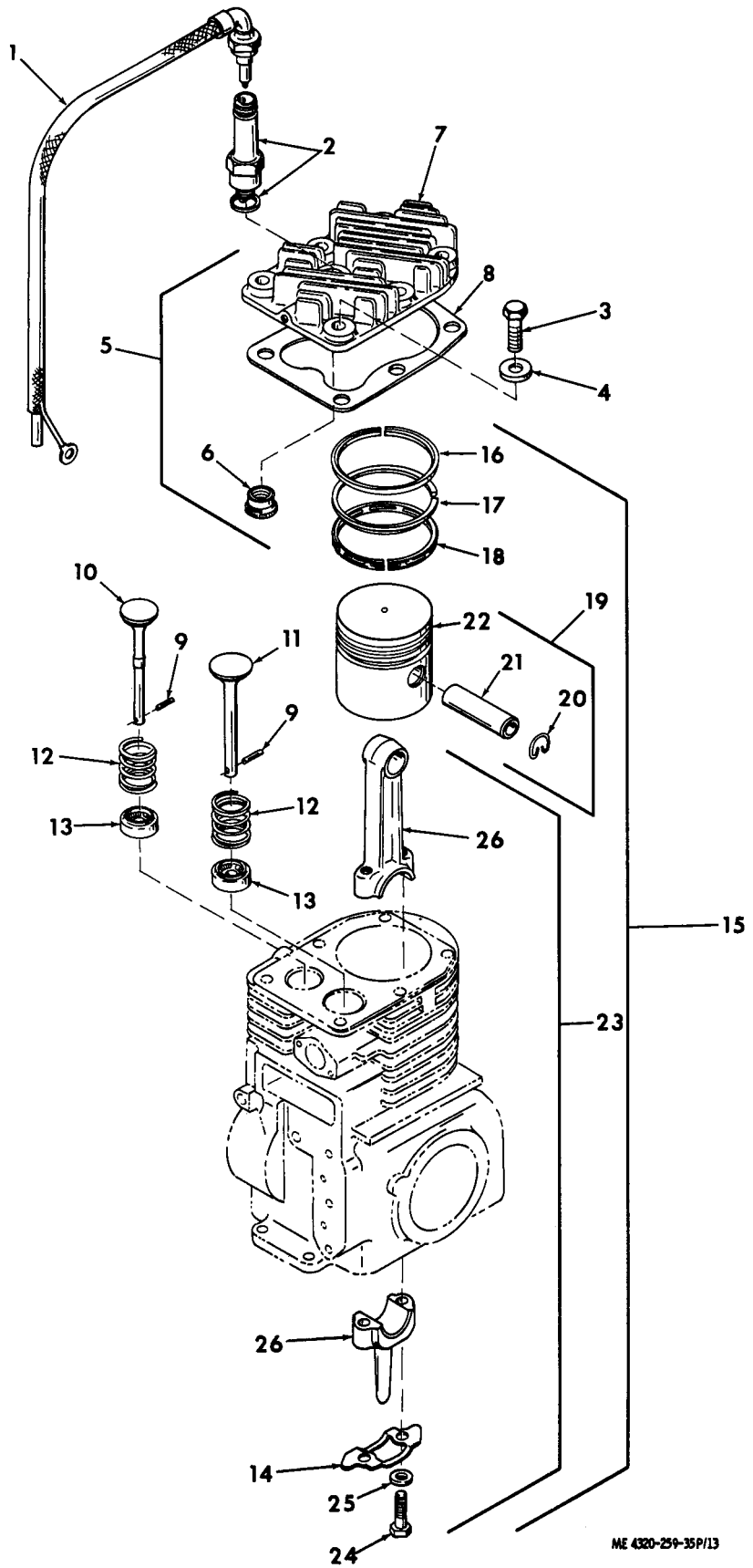
Figure 11. Flywheel and magneto





ME 4320-259-35P/12

Figure 12. Ignition



ME 4320-259-35P/13

Figure 13. Cylinder head, valves, and piston

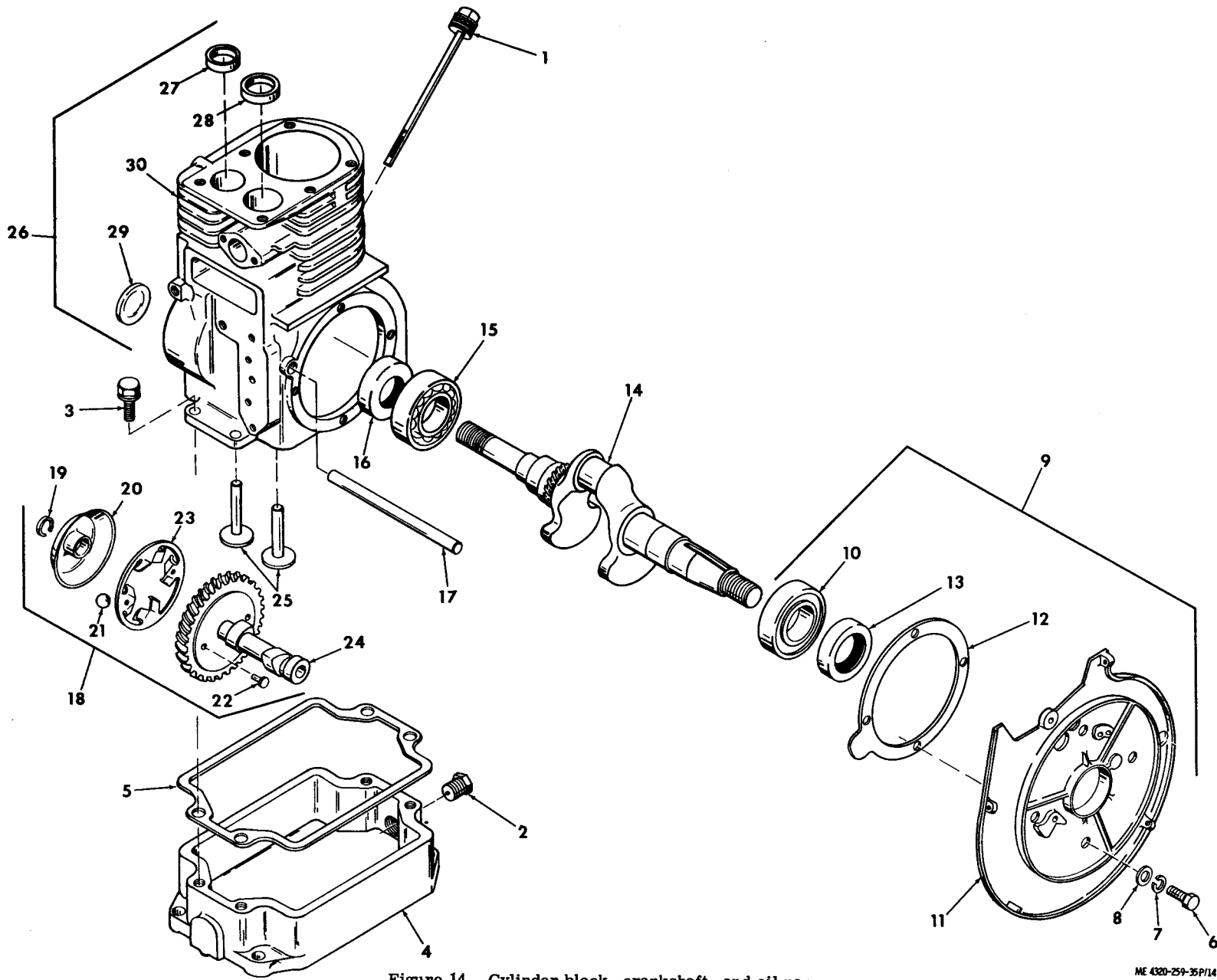


Figure 14. Cylinder block, crankshaft, and oil pan

ME 4320-259-35P14

## Section IV. INDEX — FEDERAL STOCK NUMBER AND REFERENCE NUMBER

## CROSS-REFERENCE TO FIGURE AND ITEM NUMBER

<u>Stock Number</u>	<u>Figure No.</u>	<u>Item No.</u>	<u>Stock Number</u>	<u>Figure No.</u>	<u>Item No.</u>
2805-544-0432	13	19	5306-226-4829	13	3
2805-544-0559	14	25	5306-283-0407	6	9
2805-544-0596	13	10		9	13
2805-544-0635		Group 15	5306-728-2917	14	3
2805-544-0672	13	13	5307-619-2441	6	13
2805-573-9996	10	7	5307-778-2131	10	9
2805-616-4375	13	12	5307-818-1257	9	10
2805-646-6961	14	18	5310-061-4219	4	30
2805-724-6061	14	28	5310-209-0965	13	5
2805-728-3736	15	27	5310-298-8704	14	8
2805-738-7505	14	5	5310-407-9566	4	20
2805-754-2348	14	14	5310-550-1130	6	2
2805-778-2073	15	20		12	7
2805-930-8194		Group 15		14	7
2910-729-9944	8	3	5310-576-5752	13	10
2910-752-2183	8	12	5310-582-5965	4	3
2910-789-0636	7	5	5310-584-5029	13	4
2920-288-3126	13	2	5310-637-9541	4	34
2920-564-2508	12	8		5	3
2920-758-2173	13	1		6	4
2920-758-2177	12	12		9	5
2920-778-2075	11	14		10	2
2940-371-4584	9	2	5310-685-8308	7	3
2940-428-3506	10	4		9	6
2990-544-0609	7	8	5310-732-0558	4	33
2990-585-3920	11	1		5	2
2990-799-0819	14	23	5310-761-6882	4	2
2990-980-5123	7	12		6	10
4320-360-0947	1	2		7	2
	2	2		9	4
4320-627-4731	5	9		10	1
4730-011-6452	8	7	5310-778-0261	13	4
4730-360-0591	1	7	5310-809-4058	4	5
	2	7	5310-824-9399	8	10
4730-360-0592	1	5	5310-855-2417	9	8
	2	5	5310-880-7744	4	17
4730-360-0595	1	4	5315-442-6076	13	9
	1	8	5315-544-0574	14	17
	2	4	5315-790-7833	12	13
	2	8	5330-251-4030	5	12
	3	4	5330-544-0597	6	12
	4	14	5330-562-1149	8	4
4730-684-4208	8	17	5330-573-9992	12	6
4730-724-6067	14	2	5330-585-1494	9	12
4930-904-1383		Group 15	5330-585-8283	14	16
5305-068-0501	4	28	5330-756-1392	14	13
5305-068-0502	4	1	5340-576-8985	14	29
5305-071-2240	4	4	5340-724-4349	10	5
5305-175-3230	4	38	5340-823-5316	1	6
5305-225-9081	4	29		2	6
5305-269-3211	4	35		3	2
5305-429-1188	12	1	5340-825-5317	1	3
5305-689-3965	7	10		2	3
5305-728-2916	8	2		4	13
5305-799-0891	13	24	5360-778-2067	7	6
5305-958-5245	6	1	5365-574-2284	14	19
	14	6	5365-594-9499	7	7
5305-984-6191	11	15	5910-765-8550	11	16
5305-984-6200	9	7			

<u>Reference No.</u>	<u>Mfg Code</u>	<u>Fig. No.</u>	<u>Item No.</u>	<u>Reference No.</u>	<u>Mfg Code</u>	<u>Fig. No.</u>	<u>Item No.</u>
A220090	34199	11	1	MS35190-288	96906	6	1
A220103	34199	13	19			14	6
A220136	34199	12	2	MS35206-243	96906	11	15
A220140	34199	14	18	MS35206-252	96906	9	7
A220409	34199	11	11	MS35333-39	96906	11	10
A220474	34199	12	8	MS35333-40	96906	6	2
A220532	34199	12	12			12	7
A220796	34199	13	5			14	7
A220798	34199	13	1	MS35338-44	96906	4	3
A220805	34199	8	12	MS35338-45	96906	4	20
A220807	34199	8	6	MS35338-46	96906	4	34
A220919	34199	14	26			5	3
A221174	34199	9	9			6	4
A221195	34199	14	9			9	5
A221216	34199	7	9			10	2
A221254	34199	8	20	MS35338-47	96906	11	5
A221262	34199	13	23	MS51967-2	96906	4	2
A234167	34199	8	8			6	10
B220070	34199	13	15			7	2
B220636	34199	11	7			9	4
C838M	81718	3	18			10	1
D546A	81718	3	28	MS51967-5	96906	4	17
FG2138	00818	11	16	MS51967-8	96906	4	33
FG2145	00818	11	14			5	2
FRRA83A	06947	13	13	MS90725-11	96906	4	4
G220517	34199	8	3	MS90725-36	96906	4	29
H113RA	81718	3	24	MS90725-5	96906	4	28
H1471M	81718	3	7	MS90725-6	96906	4	1
H1668B	81718	3	9	MS90725-60	96906	4	35
H1669A	81718	3	16	MS90728-36	96906	13	3
H1670M	81718	3	19	XMJ14	11583	13	2
H195RB	81718	3	26	X119-9	34199	11	4
H2061M	81718	3	17	X131-1	34199	12	1
H213RB	81718	3	22	X132-6	34199	6	9
H284M	81718	3	12			9	13
H3353	81718	3	8	X140-1	34199	8	2
H3667M	81718	3	13	X154-1	34199	14	3
H3673M	81718	3	11	X155-1	34199	12	9
H3804A	81718	3	10	X18-2	34199	9	8
H40-9385	78940	9	2	X212-2	34199	14	21
H4126	81718			X217-6	34199	8	17
H428RA	81718	3	21	X230-1	34199	14	29
H502M	81718	3	20	X25-35	34199	13	25
H538RE	81718	3	23	X25-55	34199	14	8
H7012M	81718	3	25	X25-63	34199	7	3
H714M	81718	3	27			9	6
JZM001731T	77122	9	1	X269-13	34199	7	7
K91P31882A	34199	4	31	X305-4	34199	14	2
LR57-2	77535	13	20	X447-10	34199	8	5
MS21318-14	96906	4	38	X489-1	34199	12	13
MS27021-9	96906	1	5	X49-12	34199	11	12
		2	5	X5-7	34199	7	1
MS27022-9	96906	4	16	X50-12	34199	11	9
MS27025-9	96906	1	7	X52-14	34199	11	13
		2	7	X61-41	34199	14	22
MS27026-9	96906	3	3	X67-5	34199	7	10
MS27028-9	96906	1	3	02408	05748	5	16
		2	3	02417	05748	5	18
		4	13	02418	05748	5	17
MS27029-9	96906	1	6	03219	05748	5	15
		2	6	03220	05748	5	14
		3	2	03229	05748	4	24
MS27030-5	96906	1	4	05803	05748	4	26
		1	8	05840	05748	4	25
		2	4	05858	05748	1	2
		2	8			2	2
		3	4	09307	05748	4	10
		4	14	1110X4	79470	8	7
MS27183-10	96906	4	5	12Z2007-383	94135	8	10
MS27183-12	96906	4	30	12703	05748	5	9

<u>ren No.</u>	<u>Mfg Code</u>	<u>Fig. No.</u>	<u>Item No.</u>	<u>Reference No.</u>	<u>Mfg Code</u>	<u>Fig. No.</u>	<u>No.</u>
153 1 1-2X1 5-8IN	81718	3	15	220490	34199	13	26
15689SA	05748	3	1	220491	34199	13	24
17064	05748	5	7	220492	34199	13	14
17109	05748	5	6	220520	34199	14	4
17397	05748	4	22	220526	34199	8	18
17714	05748	5	12	220527	34199	8	19
17715	05748	5	10	220534	34199	13	4
190GA1 1-2IN	81718	3	5	220537	34199	9	12
210223	34199	8	4	220540	34199	13	11
210256	34199	10	4	220549	34199	14	28
210469	34199	9	3	220558	34199	6	7
220003	34199	13	21	220562	34199	6	8
220013	34199	14	25	220605	34199	6	3
220044	34199	12	4	220795	34199	13	7
220045	34199	12	3	220799	34199	14	11
220052	34199	13	9	220801	34199		
220053	34199	14	17	220879	34199	8	Group 15
220054	34199	6	5	220880	34199	8	16
220069	34199	9	10	220881	34199	8	15
220071	34199	14	12	221138	34199	8	14
220092	34199	14	1	221250	34199	10	13
220096	34199	13	10	221252	34199	8	8
220098	34199	11	3	22564	34199	4	22
220102	34199	13	22	230160	34199	8	27
220113	34199	11	2	231324	34199	8	11
220116	34199	14	24	235014	34199	13	1
220119	34199	7	6	27204	05748	4	6
220122	34199	6	12	296	81718	3	19
220124	34199	13	8	3205LR1A	43334	14	14
220125	34199	14	23			14	10
220126	34199	7	4	38074SA	05748	1	15
220127	34199	7	11	38075SA	05748	2	1
220128	34199	14	20	38570SA	05748	4	8
220131	34199	7	13	38571SA	05748	4	40
220132	34199	7	8	38597	05748	4	36
220133	34199	6	13	38607SA	05748	4	7
220139	34199	14	27	38615SA	05748	4	37
220150	34199	11	6	38676	05748	4	18
220151	34199	Group 15		38677	05748	5	19
220156	34199	7	12	38678	05748	5	11
220157	34199	14	5	38679	05748	5	4
220166	34199	8	21	38680	05748	5	5
220168	34199	13	12	38685	05748	4	6
220173	34199	9	11	38691SA	05748	4	21
220174	34199	12	6			5	1
220175	34199	12	5	38694SA	05748	5	13
220176	34199	13	16	38696	05748	4	39
220181	34199	13	17	38698	05748	4	23
220186	34199	13	18	38705	05748	4	32
220242	34199	14	19	38732SA	05748	4	9
220289	34199	6	11	38733	05748	4	12
220358	34199	10	3	38737	05748	4	11
220368	34199	10	9	38953	05748	2	9
220369	34199	10	5	38955	05748	1	9
220370	34199	10	7	405	80204	11	8
220371	34199	9	14	50883	05748	8	9
220379	34199	10	6	549361	61864	6	6
220380	34199	7	5	568-269	81168	5	8
220426	34199	14	14	616W	81718	3	6
220430	34199	14	30	635C1 1-2IN	81718	4	15
220475	34199	12	10	65193WH	79150	14	13
220476	34199	12	11	65200WH	79150	14	16

By Order of the Secretary of the Army:

W. C. WESTMORELAND,  
*General, United States Army,*  
*Chief of Staff.*

Official:

VERNE L. BOWERS,  
*Major General, United States Army,*  
*The Adjutant General.*

Distribution:

To be distributed in accordance with DA Form 12-25A (qty rqr Block # 155),  
Direct / General Support requirements for Petroleum Distribution.

GOVERNMENT PRINTING OFFICE : 1988 0 - 207-500







**TM 5-4320-259-34P PUMPING ASSEMBLY - 1972**